

2018-20 F150 HYBRID R XB LED HEADLIGHTS INSTALL GUIDE

WARNING: By reading this document, you agree it is only to be used as an educational guide. Morimoto Lighting nor its dealers make guarantees on any finished results, nor are they to be held responsible for any damage, misuse, or personal injuries. If you are unable to clearly understand and adapt the information below, professional installation is recommended.

PACKAGE CONTENTS



2X HEADLIGHT ASSEMBLIES



1 X FUSE TAP / DRL HARNESS

IMPORTANT: If your vehicle is equipped with anything but OEM turn signals (full assemblies, LED bulbs, or otherwise) in the tail lights or elsewhere: You may experience a hyper flash and/or problem with the sequential signal setting on these headlights. This is not a defect in the headlight, and caused by un-matched impedance with your original vehicle settings.

2018-2020 FORD F150

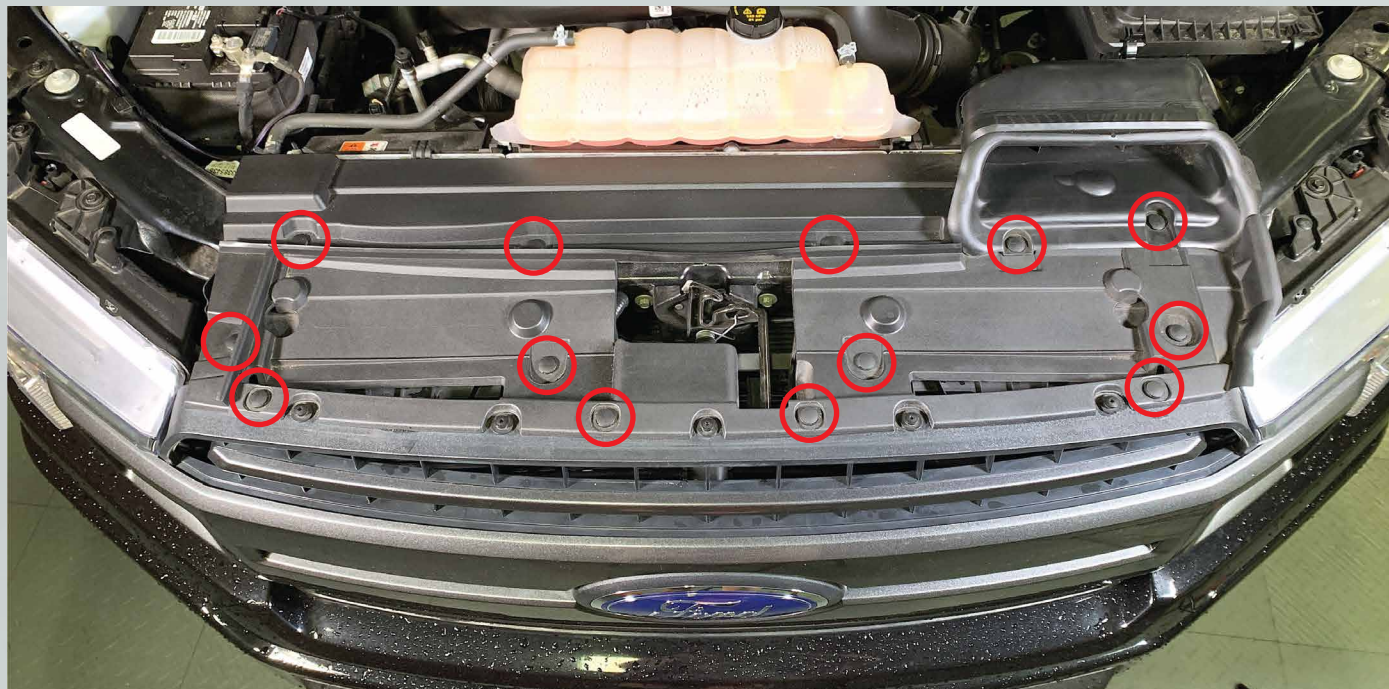


REQUIRED TOOLS

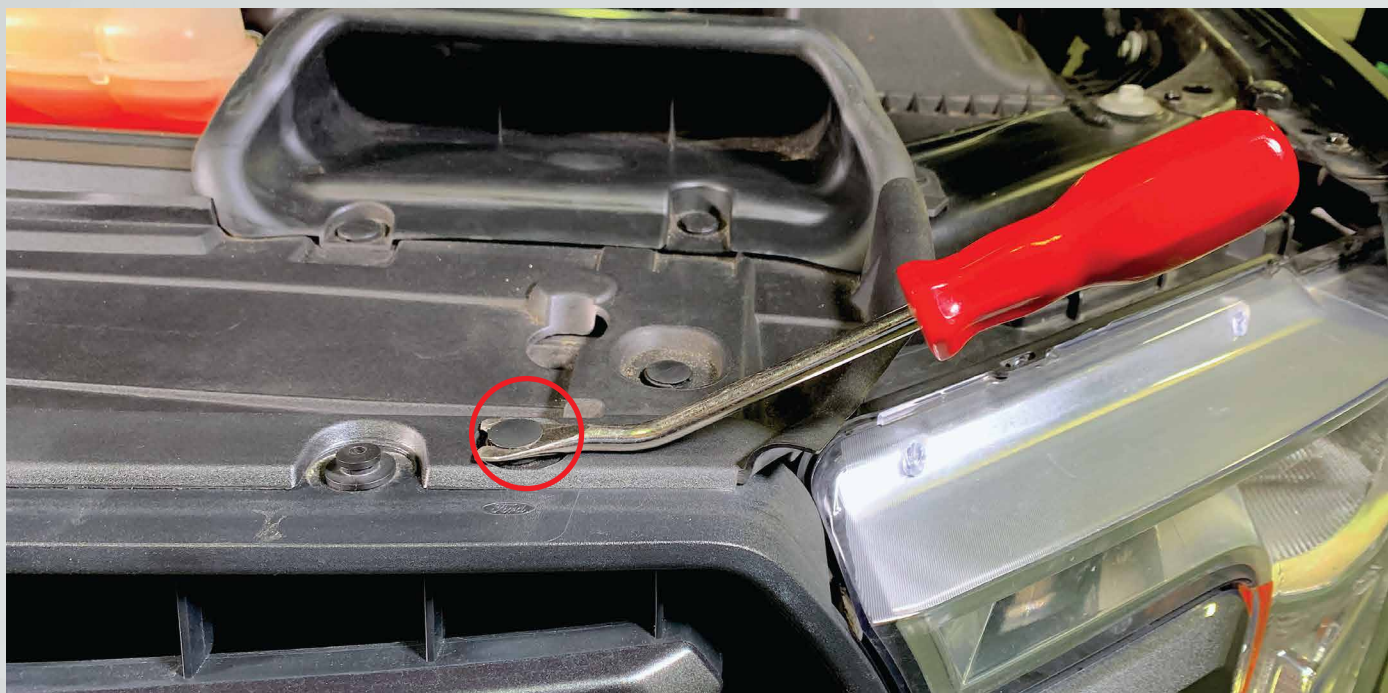
- RATCHET
- 7MM SOCKET
- 8MM SOCKET
- 10MM SOCKET
- T25 TORX BIT
- PICK TOOL
- FLAT HEAD SCREWDRIVER OR TRIM REMOVAL TOOL
- PHILIPS HEAD SCREWDRIVER
- NEEDLE NOSE PLIERS

INSTALLATION PROCESS

1. Remove the thirteen (13) plastic clips holding on the grille cover.



2. To remove clips, take a flat head screwdriver and pry up on the head til it stops. Then pry up on the bottom part of the clip to remove it.



3. Remove two (2) 7mm bolts holding the fender flare .



4. Pry out on the flare to release it from the two (2) clips. Next pry out on the bumper trim to release it from the clips holding it to the fender along the red line.



5. Repeat steps 3 & 4 on the other side of the truck.

6. Release the bumper trim from the grille by pulling it towards you and with a thin pick, pry down the locking tabs. There are six (6) locking tabs in total. Then remove the upper bumper piece from the truck.



7. Remove four (4) 10mm bolts from the top of the grille.



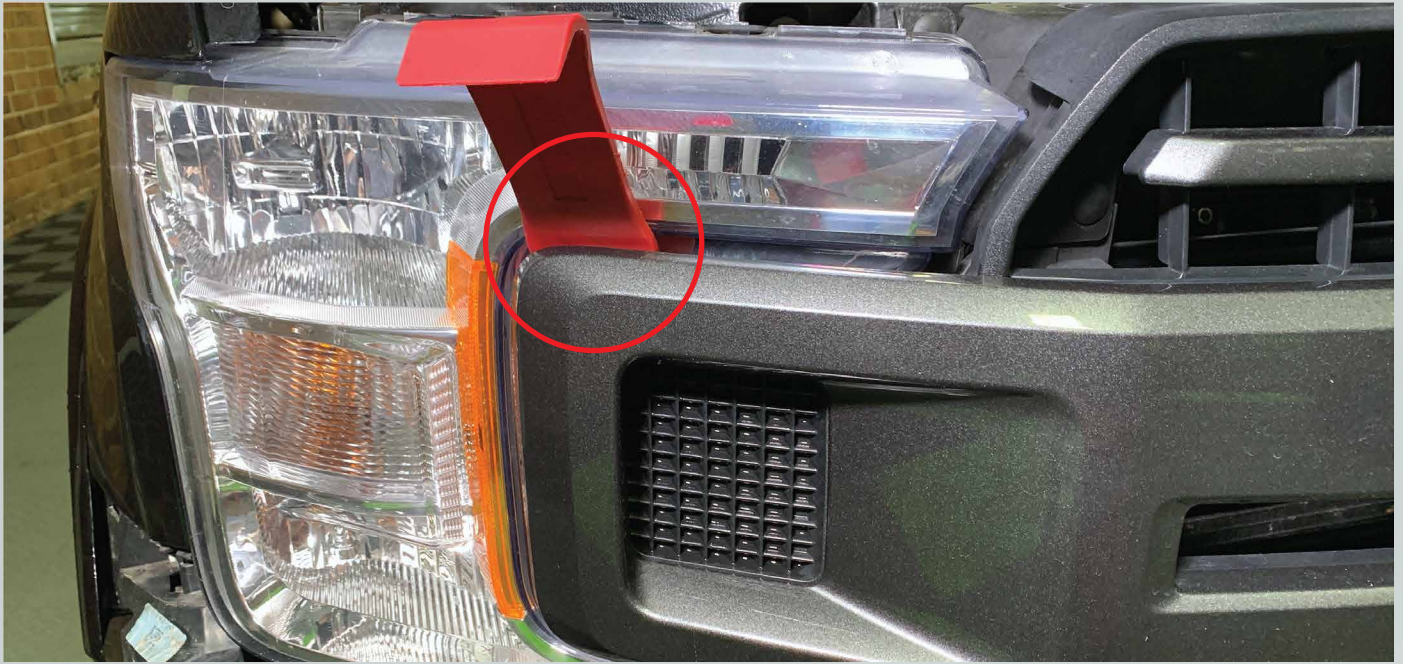
8. Remove connector off of the grille by pressing the release tab and sliding the connector up. Then pry up on the cable tie clip to release the wiring from the grille.



9. Remove one (1) 8mm bolt from the bottom of the grille. Remove the same bolt on the other side of the grille.



10. Pry up under the grille sides with a plastic pry tool to release the locking clips.



11. Remove grille from the truck and set aside.

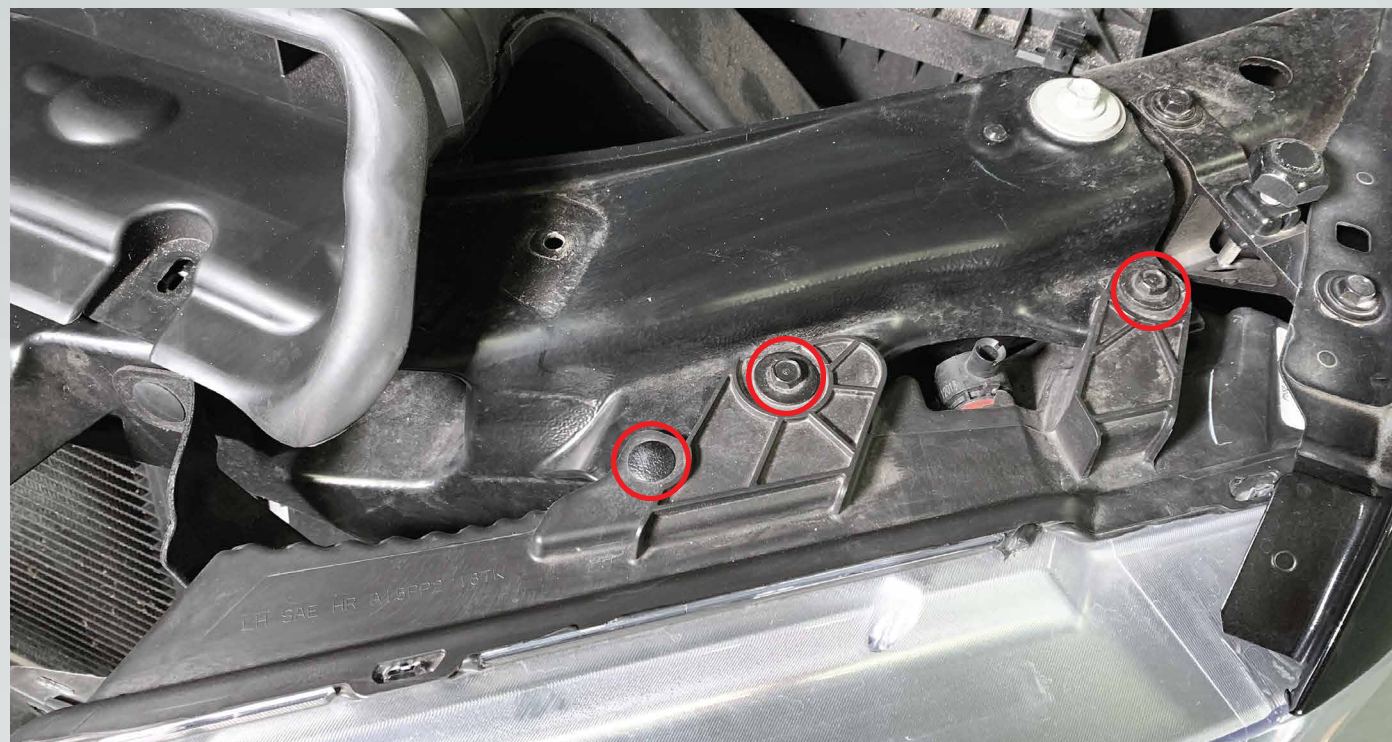
12. Remove four (4) 10mm bolts from the bottom of the headlight. Remove the bracket with the three bolts.



13. Pry down to release this vent from the headlight.



14. Remove two (2) 10mm bolts from the headlight. Pry up and remove the plastic clip. Slide the headlight forward to remove it from the truck.



15. Disconnect the black connector by pressing the release tab and sliding the connector off. Remove the turn signal socket by twisting it counter clockwise and pulling it out of the headlight.



16. Remove the parking light black connector by rotating it counter clockwise til it stops, then pull the socket out of the headlight.



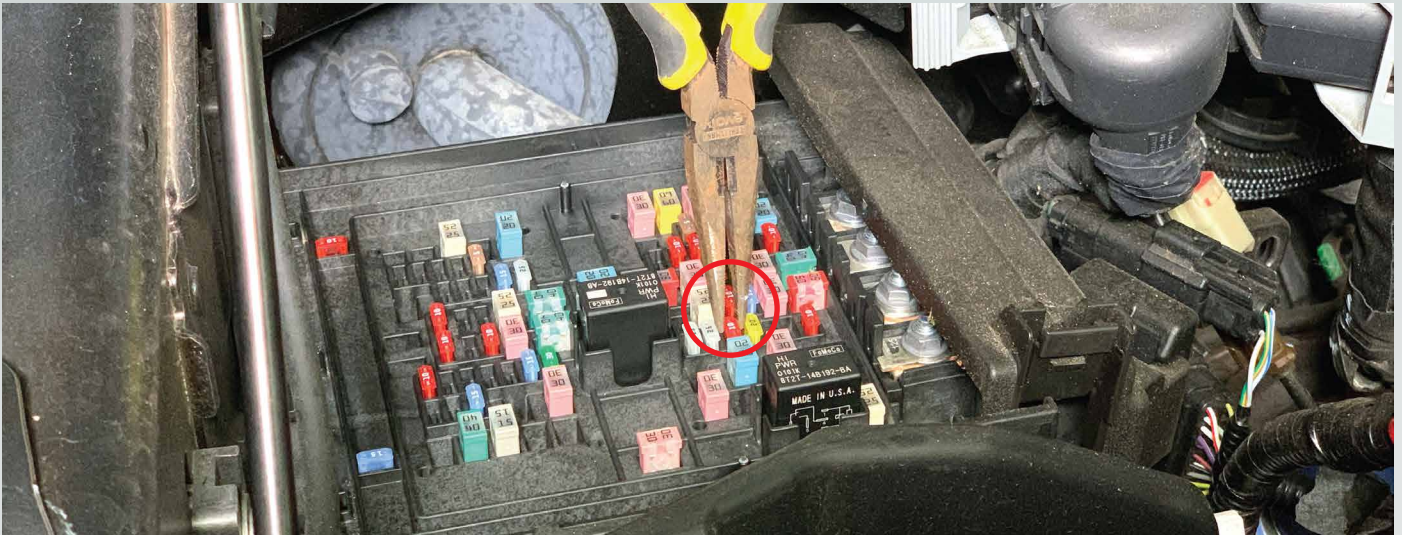
17. Remove headlight off the truck.

18. Remove three (3) T25 bolts and the bracket. Transfer the bolts and bracket onto the Morimoto headlight.



19. Repeat steps 11-18 on the other side of the truck.

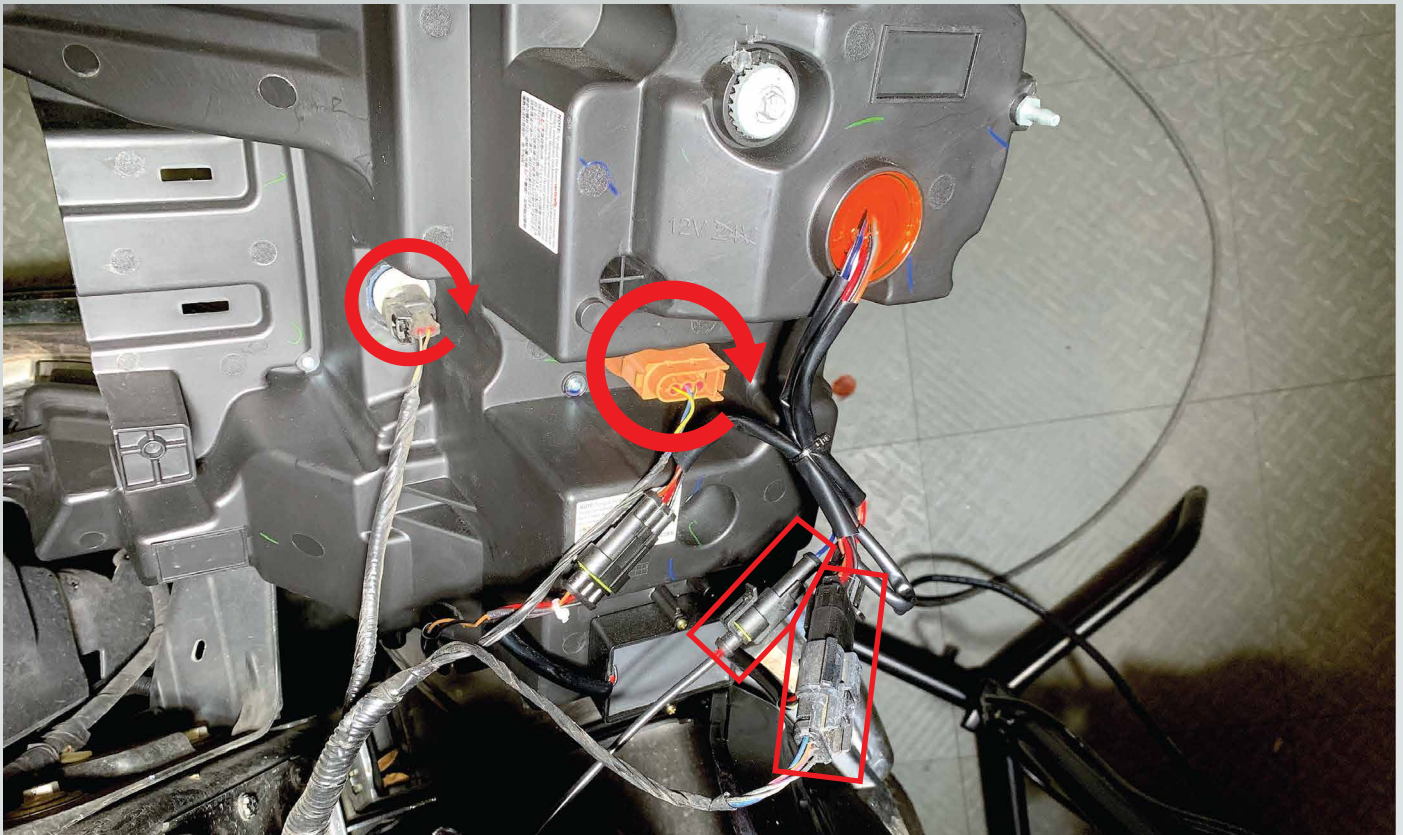
20. Locate the fuse box on the passenger side and remove fuse #36.



21. Install DRL harness fuse link in place of the fuse you just removed. Run the shorter part of the harness to the passenger headlight and the longer part to the driver headlight and secure the harness to the truck.



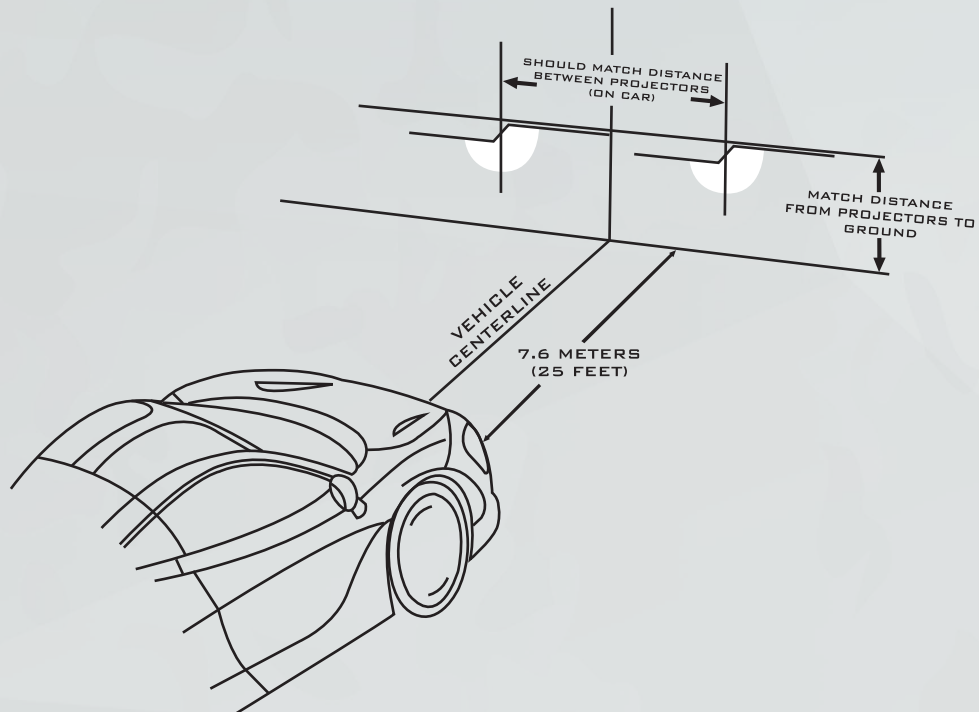
22. Grab your Morimoto headlight, plug in the 2 wire connectors into the truck harness. Place the 2 bulb sockets into the headlight and twist them clockwise to lock them into place.



23. Place headlight in mounting position and thread in the top bolts by hand.
24. Repeat steps 22-23 on the other side of the truck.
25. Turn the truck on and go through all of the functions.
26. Reassemble the truck in the reverse order that you took it apart.
27. To adjust the low beam, slide a philips head screwdriver into this slot and turn the screwdriver to the right to move the beam up and turn to the left to move the beam down.



- Please refer to the aiming standards below when adjusting your headlight beam.



28. For the Morimoto headlights to function properly, go into your factory settings in your gauge cluster and select Settings -> Vehicle -> Lighting, make sure there is no check mark beside Daytime Light.



ENJOY YOUR NEW MORIMOTO XB HEADLIGHTS!