



2010-2014 RAPTOR 4BANGER FOG LIGHT KIT INSTALL GUIDE

WARNING: By reading this document, you agree it is only to be used as an educational guide. Morimoto Lighting nor its dealers make guarantees on any finished results, nor are they to be held responsible for any damage, misuse, or personal injuries. If you are unable to clearly understand and adapt the information below, professional installation is recommended.

PACKAGE CONTENTS

- 1x BAF066L Driver Side Bracket
- 1x BAF066R Passenger Side Bracket
- 6x U-Brackets (2x each marked with "1", "2", and "3")
- 2x M8 x 35mm Flanged Bolts
- 2x 10mm Spacers
- 12x M6 Torx Head Bolts
- 6x SS Square Shoulder Carriage Bolts
- 6x SS Nylon Lock Nuts
- 1x BAF024H Relay Harness (Optional)
- 2-3x Sets 4Banger Pods (Optional)

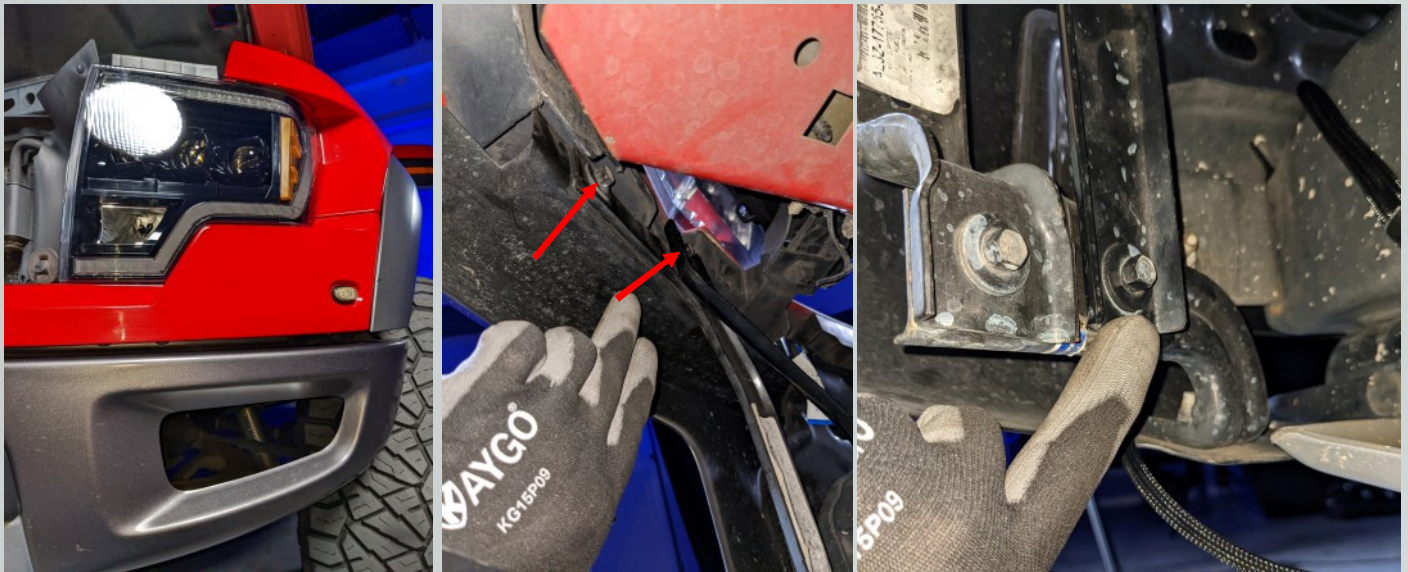
TOOLS REQUIRED (NOT INCLUDED)

- T25 Torx Socket or L-Key
- 17mm Combination Wrench
- 13mm Socket or Wrench
- 10mm Socket or Wrench
- Flat Head Screwdriver or Trim Removal Tool
- Zip Ties



INSTALLATION PROCESS

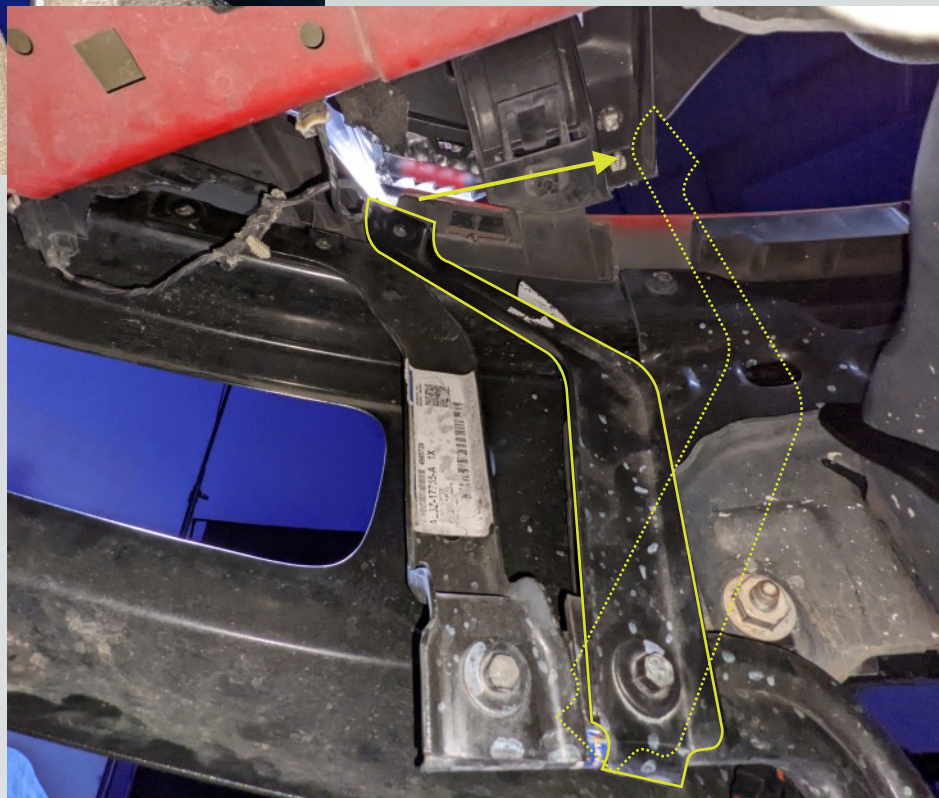
1. Start by locating the two mounting bolts behind the bumper on each side. They can be found above the fog cutout in the bumper.



2. Using a 10mm socket or wrench, loosen and remove the two bolts on each side and set aside. One of these will be reused. NOTE: You may find it helpful to use a small pry tool to push up the plastic piece covering the outer bolt. If you find that your bolts are rusted, the factory bolts can be replaced with M8 bolts of appropriate length.



3. Loosen the bottom bolt and swing the bracket out of the way. This bolt does not need to be removed.



4. The fog light kit can be configured to fit two or three pods per side depending on preference.



2-Pod Configuration
Use GREEN circled holes
Use U-Brackets #1 and #2



3-Pod Configuration
Use RED circled holes
Use all U-Brackets

or

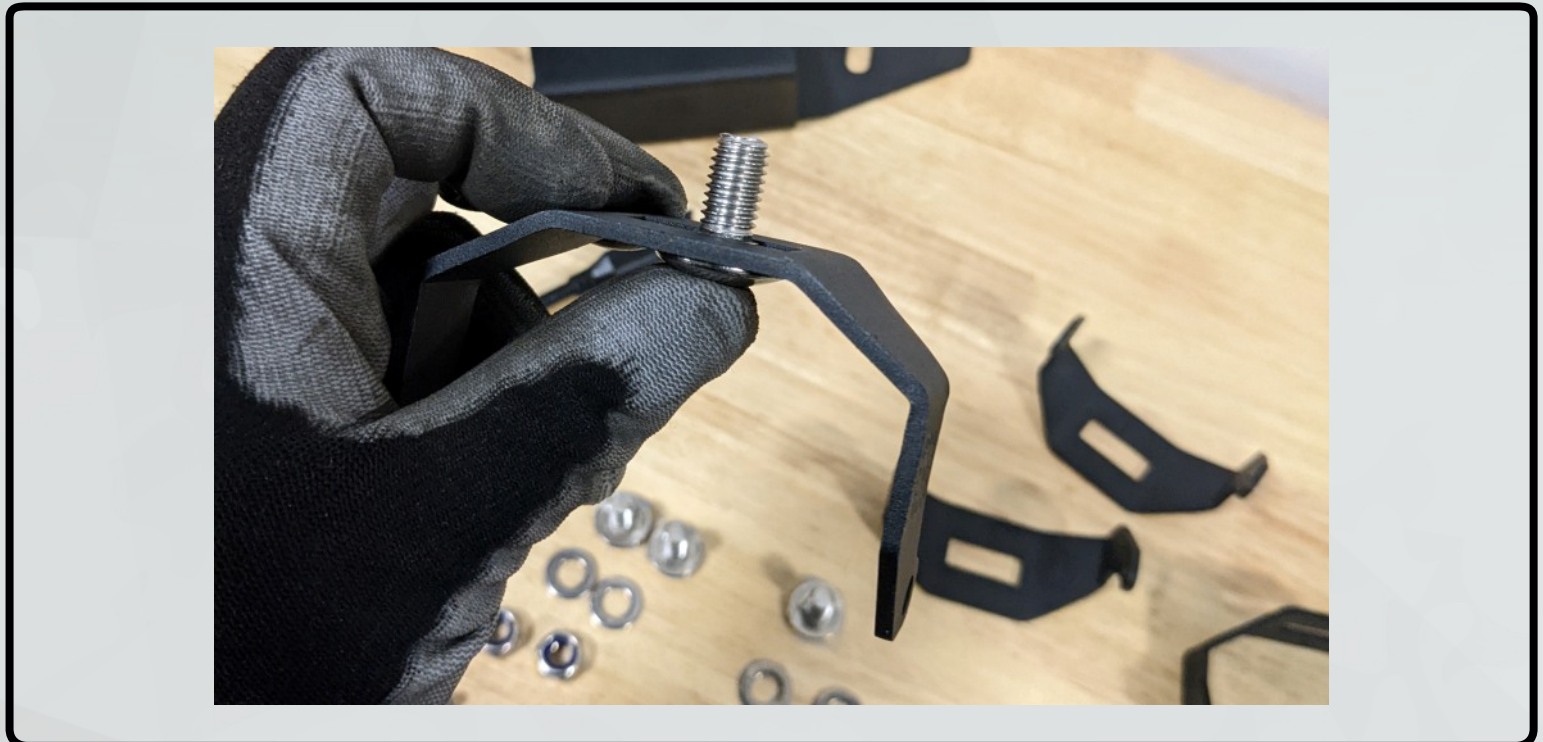


5. We will now move on to assemble the pods and U-Brackets.

Note the differences in heights for the brackets #1, #2, and #3. Brackets #1 are the longest and should be used towards the center of the vehicle, then #2 and #3 towards the outside.



6. Fit the carriage bolt from the inside through the U-Bracket as shown.



7. Fit the bracket over the light pod, install the M6 torx bolts. Use a T25 Torx socket or L-Key and snug the bolts up. Do not overtighten.



8. Back on the vehicle, place the appropriate bracket in place, thread the factory bolts (or equivalent replacements where rusted) through the bracket and back into their original location. Use a 10mm wrench to tighten bolts and snug up. Do not overtighten.



9. Push the carriage bolt of the desired pod up through the bracket from the bottom. Place a washer and nylon lock nut onto bolt and hand tighten only. Repeat with other pods in the desired configuration.

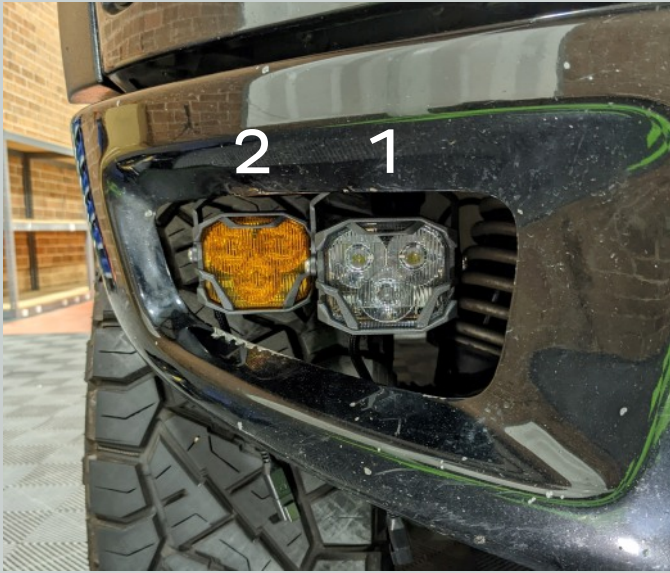


10. Once pods are placed in the desired location, tighten the nylon lock nut using a 17mm wrench until snug. Double check aim and adjustment, then fully tighten the lock nuts.



2-Pod Configuration

3-Pod Configuration



◀ Outside



◀ Outside

-END-