



BRIGHT IS ONLY THE BEGINNING

INSTALL GUIDE

21+ FORD BRONCO XB TAIL LIGHTS

LF750/LF751



WARNING: IT IS THE INSTALLERS RESPONSIBILITY TO CONFIRM COMPLIANCE WITH STATE AND LOCAL LAWS. BY READING THIS DOCUMENT, YOU AGREE IT IS ONLY TO BE USED AS AN EDUCATIONAL GUIDE. MORIMOTO LIGHTING NOR ITS DEALERS MAKE GUARANTEES ON ANY FINISHED RESULTS, NOR ARE THEY TO BE HELD RESPONSIBLE FOR ANY DAMAGE, MISUSE, OR PERSONAL INJURIES. IF YOU ARE UNABLE TO CLEARLY UNDERSTAND AND ADAPT THE INFORMATION BELOW, PROFESSIONAL INSTALLATION IS RECOMMENDED.

IMPORTANT: IF YOUR VEHICLE IS EQUIPPED WITH ANYTHING BUT MORIMOTO OR OEM TAILLIGHTS, SIDE MARKERS OR OTHER OEM EXTERIOR LIGHTING; YOU MAY EXPERIENCE A HYPER FLASH AND/OR PROBLEMS WITH THE SEQUENTIAL SIGNAL SETTING ON THESE HEADLIGHTS. THIS IS NOT A DEFECT IN THE HEADLIGHT AND CAUSED BY UN-MATCHED IMPEDANCE WITH YOUR ORIGINAL VEHICLE SETTINGS.



21+ FORD BRONCO XB TAIL LIGHTS

TABLE OF CONTENTS	PAGE
DISASSEMBLY -----	3
INSTALLATION -----	9
BOOST BAR INSTALLATION -----	11

WHAT'S INCLUDED



2X (PAIR) TAIL LIGHTS



2X MAGNET-MOUNTED RESISTORS



OPTIONAL: 1X BOOST BAR REVERSE LIGHT



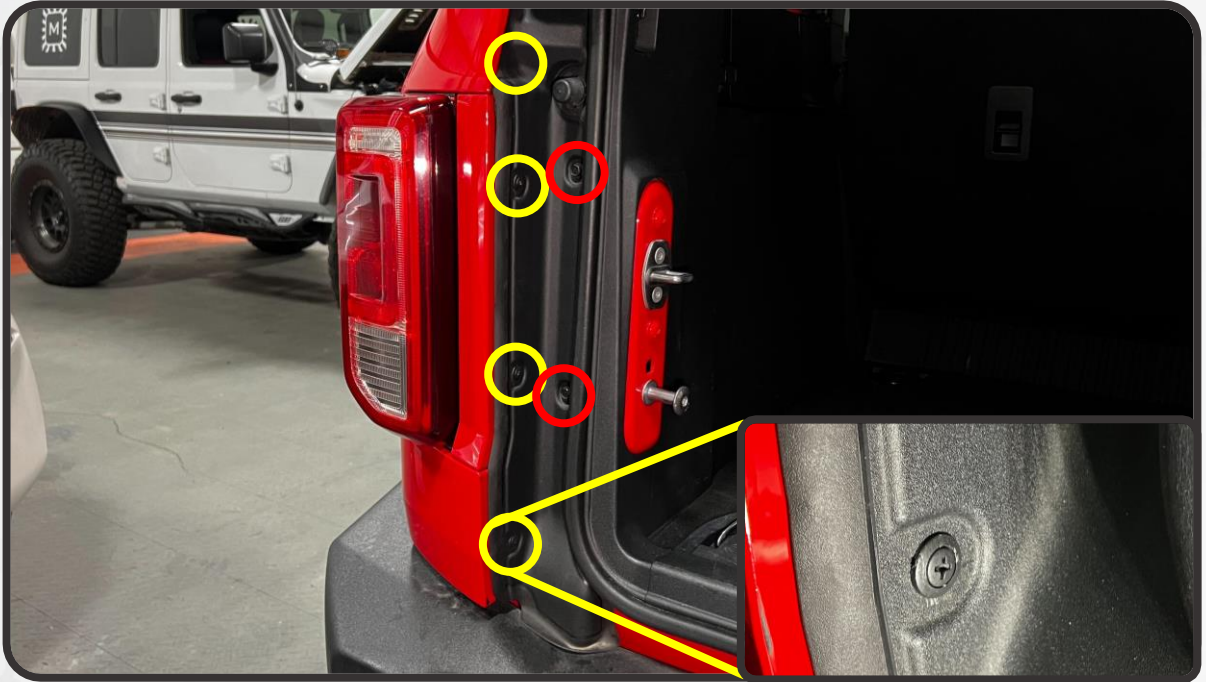
REQUIRED TOOLS

- RATCHET
- 8MM SOCKET
- 10MM SOCKET



DISASSEMBLY

1. BEGINNING AT THE REAR OF THE VEHICLE WITH THE REAR HATCH OPEN, REMOVE THE FOUR PHILLIPS HEAD PUSH CLIPS BY UNSCREWING THE CENTER SECTION, AND PULLING OUT THE OUTER BODY OF THE CLIP (YELLOW) AND TWO 10MM SCREWS (RED) FROM THE PLASTIC TRIM ON THE INNER EDGE OF THE TAIL LIGHT



2. STARTING FROM THE BOTTOM, PULL THE PLASTIC TRIM AWAY FROM THE VEHICLE, OVER THE RUBBER STOPPER, AND OFF THE TRUCK. SET IT ASIDE

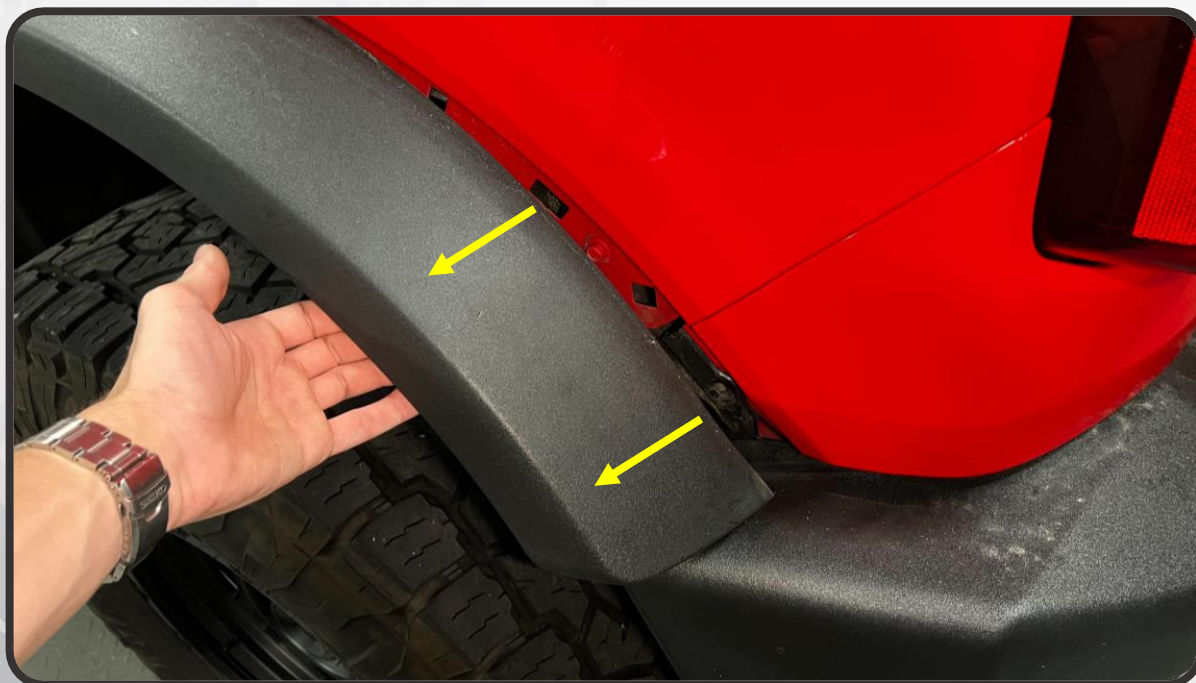


DISASSEMBLY

- MOVING TO THE INSIDE OF THE REAR WHEEL ARCH, ROTATE THE TWO PLASTIC LATCHES 90° COUNTERCLOCKWISE INTO THE DOWNWARD POSITION



- PULL THE REAR EDGE OF THE FENDER FLARE AWAY FROM THE VEHICLE TO RELEASE IT. ONLY THE REARWARD PORTION OF THE FLARE NEEDS TO BE RELEASED FROM THE BODY

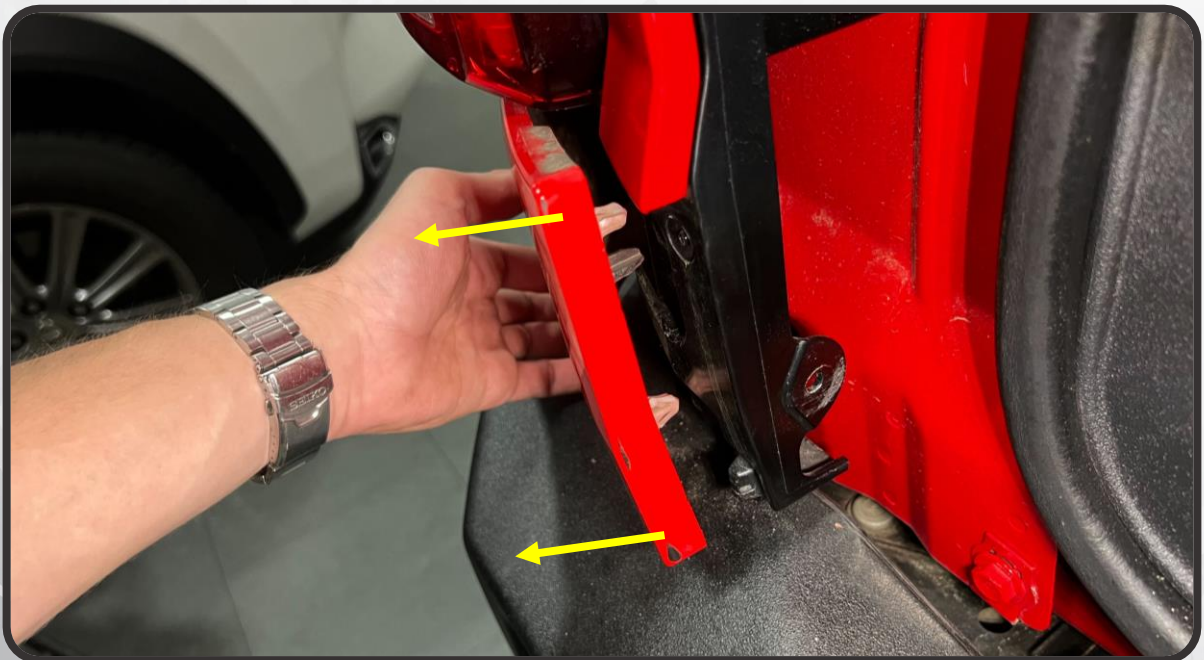


DISASSEMBLY

5. WITH THE WHEEL FLARE PULLED AWAY FROM THE BODY, REACH BEHIND THE FLARE AND GRAB ONTO THE LOWER EDGE OF THE CORNER BODY PANEL. FIRMLY PULL THE PANEL AWAY FROM THE BODY TO RELEASE THE CLIPS SECURING THE OUTER EDGE



6. MOVE TO THE INNER EDGE OF THE CORNER BODY PANEL AND FIRMLY PULL IT STRAIGHT BACK, AWAY FROM THE VEHICLE, TO RELEASE THE TWO PUSH TABS THAT SECURE IT. WITH THE PANEL REMOVED, SET IT ASIDE



DISASSEMBLY

7. REMOVE THE 10MM BOLT FROM THE BOTTOM OF THE INNER TAIL LIGHT TRIM BRACKET



8. FIRMLY PULL THE INNER TAIL LIGHT TRIM PANEL STRAIGHT BACK, RELEASING THE THREE TABS SECURING IT

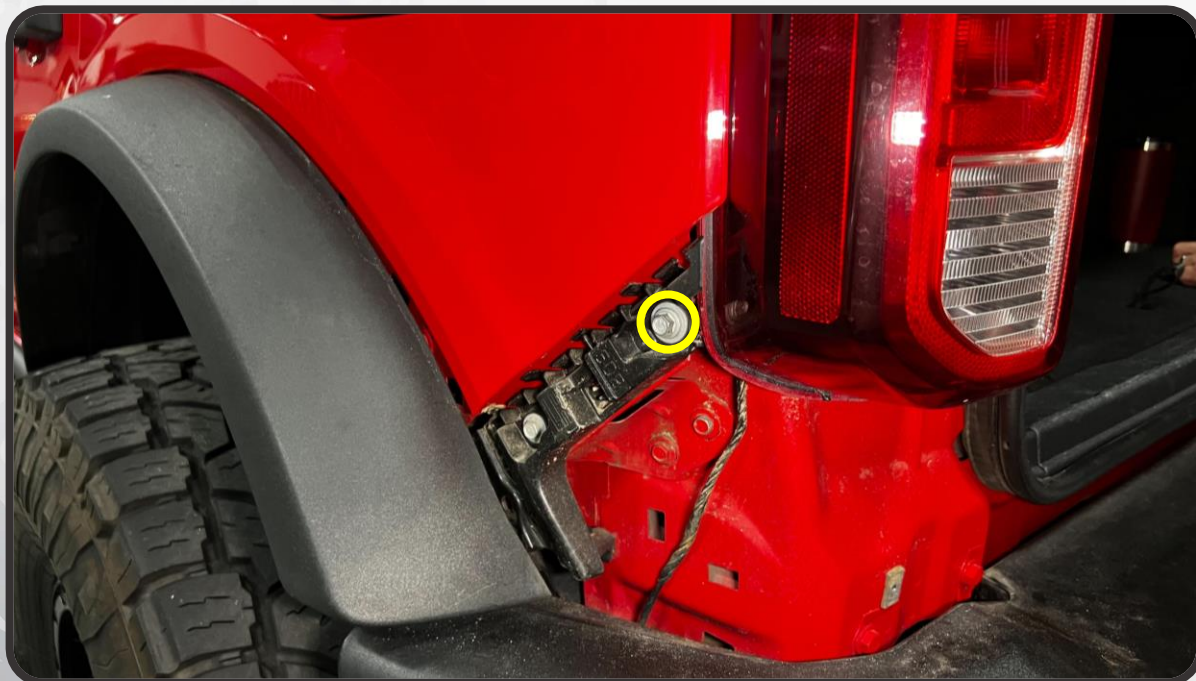


DISASSEMBLY

9. DEPRESS THE TAB ON THE FACTORY TAIL LIGHT CONNECTOR AND PULL UP ON IT TO DISCONNECT THE LIGHT



10. REMOVE THE 10MM BOLT SECURING THE OUTSIDE EDGE OF THE TAIL LIGHT TO THE VEHICLE



DISASSEMBLY

11. REMOVE THE TWO 8MM BOLTS SECURING THE INNER EDGE OF THE LIGHT TO THE VEHICLE



12. WITH ALL OF THE HARDWARE REMOVED, PULL THE TAIL LIGHT ASSEMBLY STRAIGHT BACK OFF THE VEHICLE, AND SET IT ASIDE



TAIL LIGHT INSTALLATION

13. IF YOUR VEHICLE CAME EQUIPPED WITH FACTORY HALOGEN TAIL LIGHTS, INSTALL ON OF THE MAGNET MOUNT RESISTORS INSIDE OF THE TAIL LIGHT CAVITY AS SHOWN BELOW. IF YOUR VEHICLE CAME WITH FACTORY LED TAIL LIGHTS, SKIP AHEAD TO STEP 15 ON PAGE 10



14. CONNECT THE RESISTOR TO THE NEW TAIL LIGHT ASSEMBLY



TAIL LIGHT INSTALLATION

15. FIT THE NEW TAIL LIGHT ASSEMBLY ONTO THE VEHICLE AND REINSTALL THE THREE FACTORY BOLTS (TWO 8MM AND ONE 10MM) TO SECURE THE TAIL LIGHT ASSEMBLY. IF YOU WILL BE INSTALLING THE OPTIONAL BACKUP LIGHT BOOST BAR, MAKE SURE TO LEAVE THE BOOST BAR'S CONNECTOR HANGING BELOW THE TAILLIGHT (LEFT SIDE ONLY). IF YOU ARE NOT INSTALLING THE BOOST BAR, THIS CAN BE LEFT TUCKED BEHIND THE TAIL LIGHT
16. CONNECT THE FACTORY TAIL LIGHT CONNECTOR TO THE NEW TAIL LIGHT ASSEMBLY



17. REPEAT STEPS 1-16 ON THE OPPOSITE SIDE

IF YOU WILL BE INSTALLING THE OPTIONAL BACKUP LIGHT BOOST BAR, CONTINUE TO THE NEXT PAGE. IF NOT, SKIP AHEAD TO PAGE 15



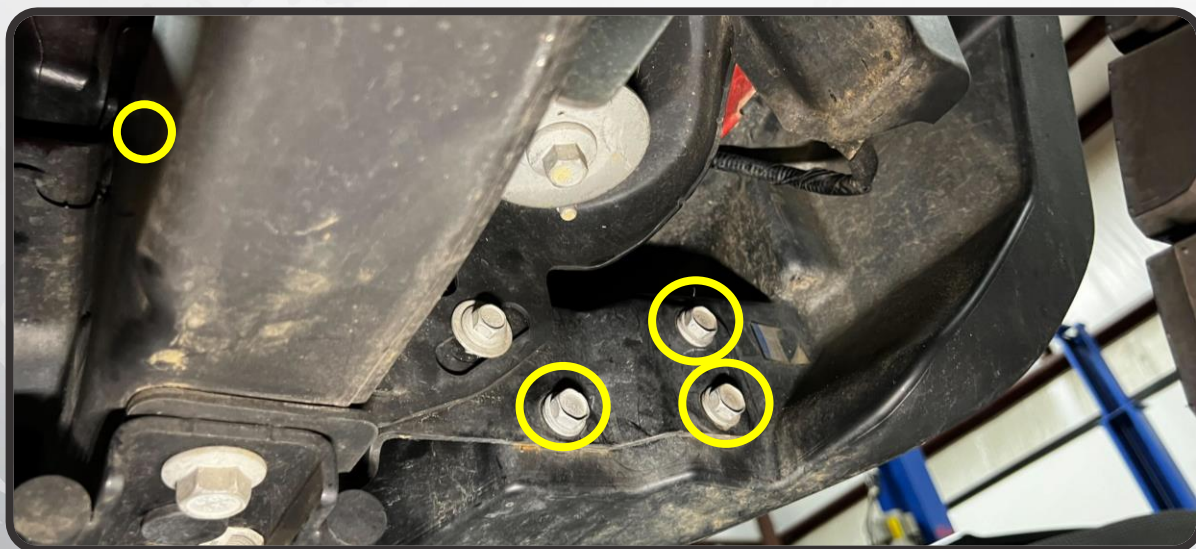
BOOST BAR INSTALLATION (OPTIONAL)

NOTE: BASE BUMPER SHOWN. INSTALLATION PROCEDURE MAY VARY DEPENDING ON WHICH BUMPER YOUR VEHICLE CAME EQUIPPED WITH FROM THE FACTORY, OR IF YOU HAVE AN AFTERMARKET REAR BUMPER

18. DISCONNECT THE TAG LIGHT HARNESS CONNECTOR LOCATED BEHIND THE REAR LEFT WHEEL



19. REMOVE THE 15MM BOLTS THAT SECURE THE REAR BUMPER TO THE VEHICLE FROM THE BACK-SIDE OF THE BUMPER ON EACH SIDE. WITH THE HARDWARE REMOVED, REMOVE THE BUMPER FROM THE VEHICLE, AND SET IT ON A WORK BENCH OR BUMPER STAND



BOOST BAR INSTALLATION (OPTIONAL)

20. MAKE A MARK AT THE TOP RIGHT CORNER OF THE LICENSE PLATE, AND THEN REMOVE THE LICENSE PLATE

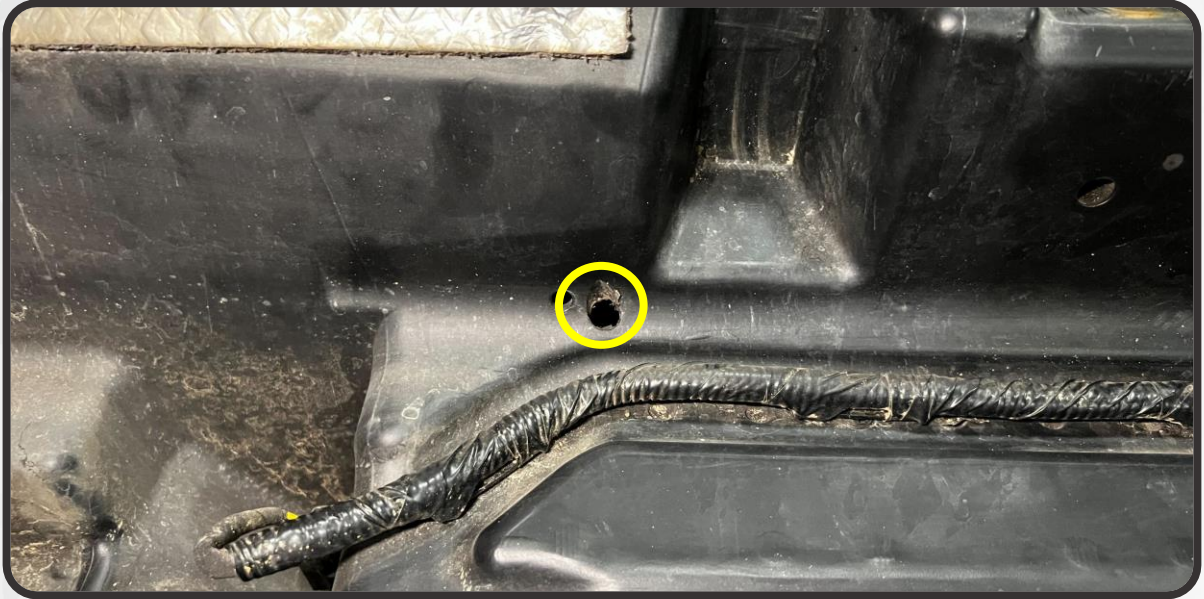


21. DRILL A 5/16" HOLE WHERE YOU MARKED THROUGH THE FRONT OF THE BUMPER



BOOST BAR INSTALLATION (OPTIONAL)

22. FLIP THE BUMPER OVER, AND DRILL A CORRESPONDING HOLE THROUGH THE BACK-SIDE OF THE BUMPER, MAKING SURE TO AVOID THE WIRE HARNESS ATTACHED TO THE BUMPER. THIS HOLE MAY BE SLIGHTLY OFF FROM YOUR HOLE ON THE FRONT. THEY DON'T NEED TO BE PERFECTLY ALIGNED, JUST CLOSE ENOUGH THAT YOU CAN FISH THE BOOST BAR HARNESS THROUGH



23. FLIP THE BUMPER BACK OVER, AND FISH THE BOOST BAR HARNESS THROUGH THE HOLE ON THE FRONT OF THE BUMPER, AND OUT THE HOLE ON THE REAR

24. INSTALL YOUR BOOST BAR AND LICENSE PLATE ONTO THE BUMPER



BOOST BAR INSTALLATION (OPTIONAL)

25. ROUTE YOUR BOOST BAR WIRING ALONG THE TAG LIGHT HARNESS, SECURING THE HARNESES TOGETHER USING ZIP-TIES



26. REINSTALL THE BUMPER ONTO THE VEHICLE

27. CONNECT THE BOOST BAR HARNESS TO THE BOOST BAR CONNECTOR ON THE LEFT-SIDE TAIL LIGHT. BUNDLE AND SECURE ANY EXCESS WIRING BEHIND THE BUMPER

28. RECONNECT THE TAG LIGHT HARNESS



INSTALLATION

29. TEST AND CONFIRM THAT ALL FUNCTIONS ARE WORKING PROPERLY
30. REASSEMBLE THE TRIM SURROUNDING THE TAIL LIGHT IN THE REVERSE ORDER YOU REMOVED IT



- ENJOY YOUR NEW MORIMOTO XB TAIL LIGHTS! -

