



2014-15 CHEVY SILVERADO XB LED HEADLIGHTS INSTALL GUIDE

WARNING: By reading this document, you agree it is only to be used as an educational guide. Morimoto Lighting nor its dealers make guarantees on any finished results, nor are they to be held responsible for any damage, misuse, or personal injuries. If you are unable to clearly understand and adapt the information below, professional installation is recommended.

PACKAGE CONTENTS



**2X HEADLIGHT ASSEMBLIES
W/ CHROME OR BLACK TRIM**



1 X FUSE TAP / DRL HARNESS

IMPORTANT: If your vehicle is equipped with anything but OEM turn signals (full assemblies, LED bulbs, or otherwise) in the tail lights or elsewhere: You may experience a hyper flash and/or problem with the sequential signal setting on these headlights. This is not a defect in the headlight, and caused by un-matched impedance with your original vehicle settings.

2014-2015 CHEVY SILVERADO 1500

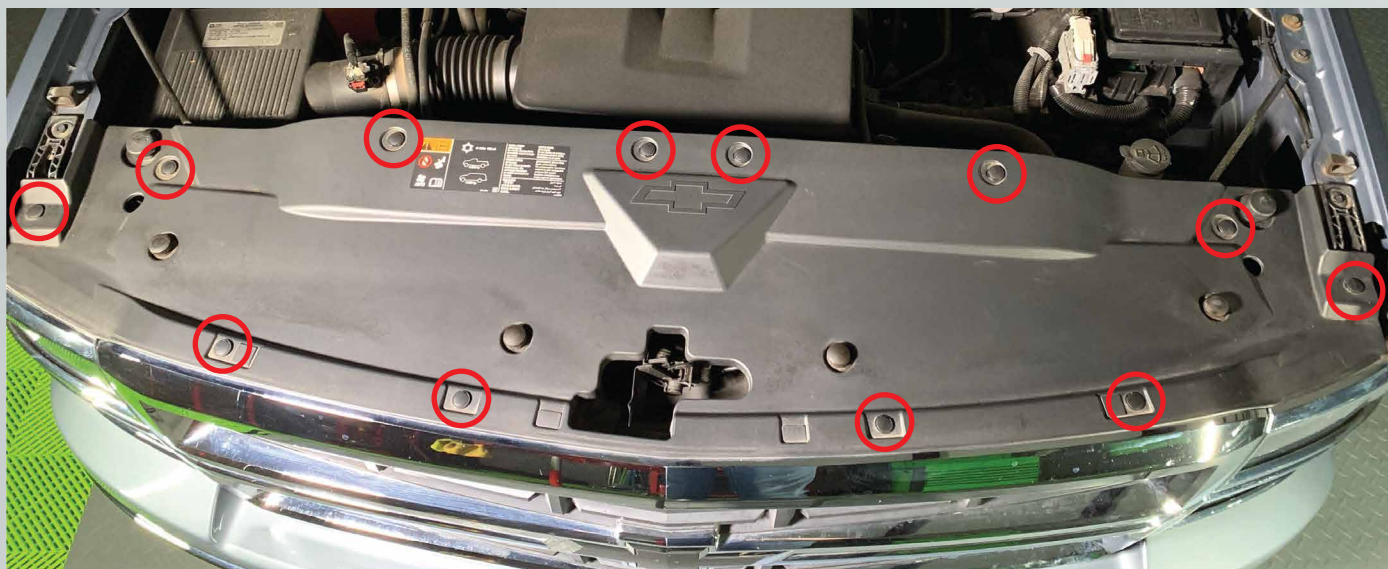


REQUIRED TOOLS

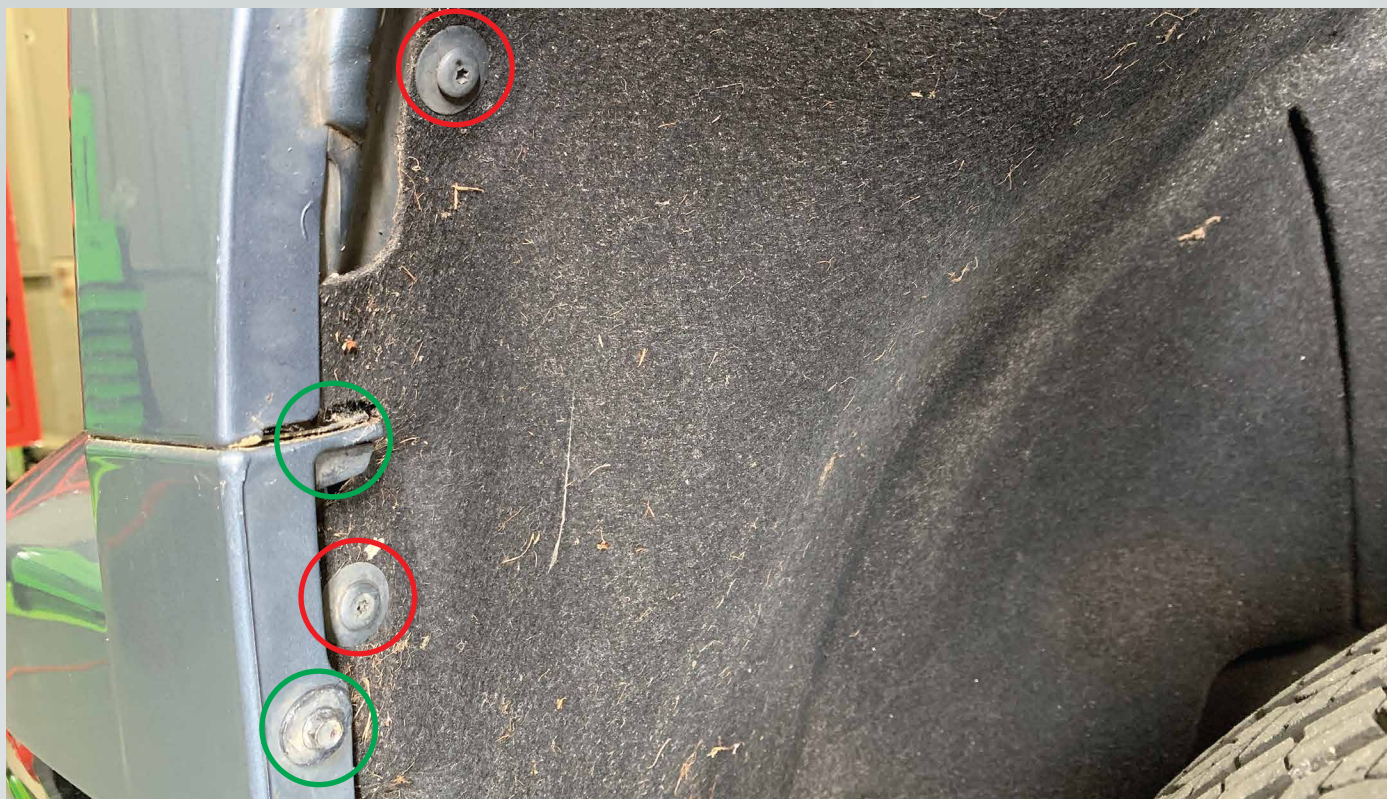
- RATCHET
- 7MM SOCKET
- 10MM SOCKET
- T15 TORX BIT
- T25 TORX BIT
- PICK TOOL
- FLAT HEAD SCREWDRIVER OR TRIM REMOVAL TOOL
- PHILIPS HEAD SCREWDRIVER
- NEEDLE NOSE PLIERS

INSTALLATION PROCESS

1. Remove the twelve (12) plastic clips holding on the grille cover and remove it off the truck.



2. Remove the two (2) T15 Torx screws (red), also remove the two (2) 7mm bolts (green).



3. Pry the corner out to release the upper bumper trim from the clips.



4. Repeat steps #2,3 on the other side of the truck.

5. With a pry tool carefully pry down the upper bumper piece from the grille and press down the tabs with a pick. There are six (6) tabs.



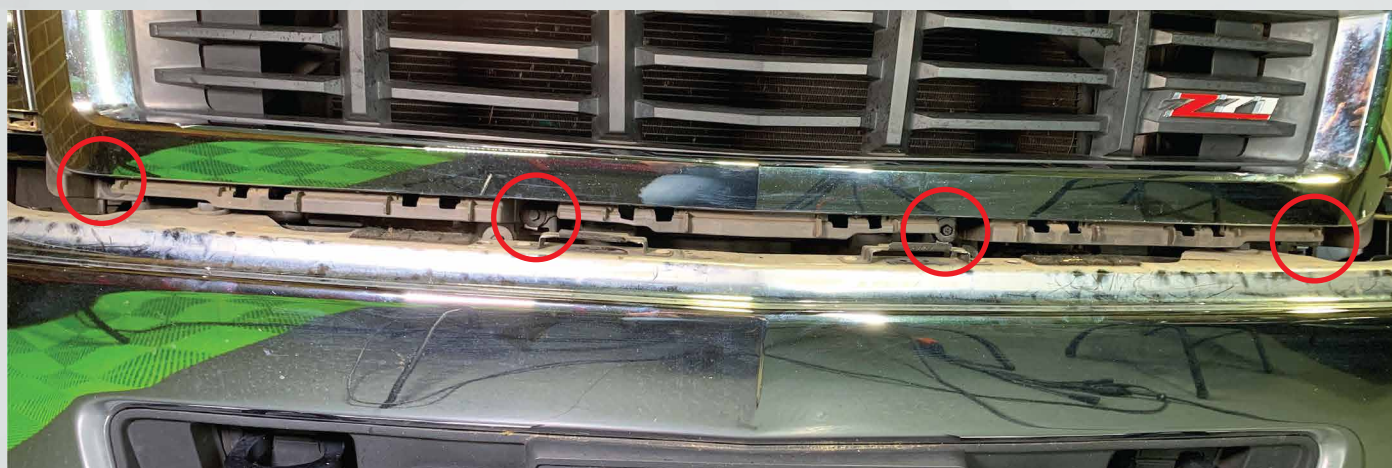
- These are the six (6) tabs.



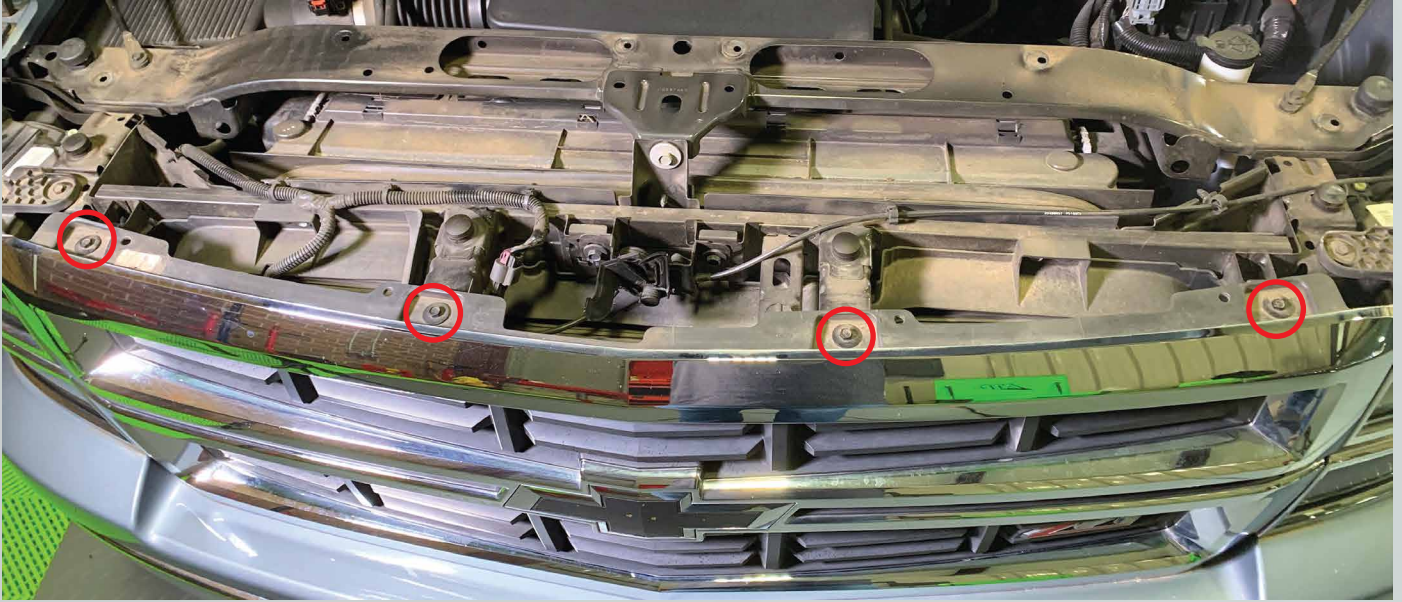
- Another way to release these clips is get under the truck and pull down the tabs.



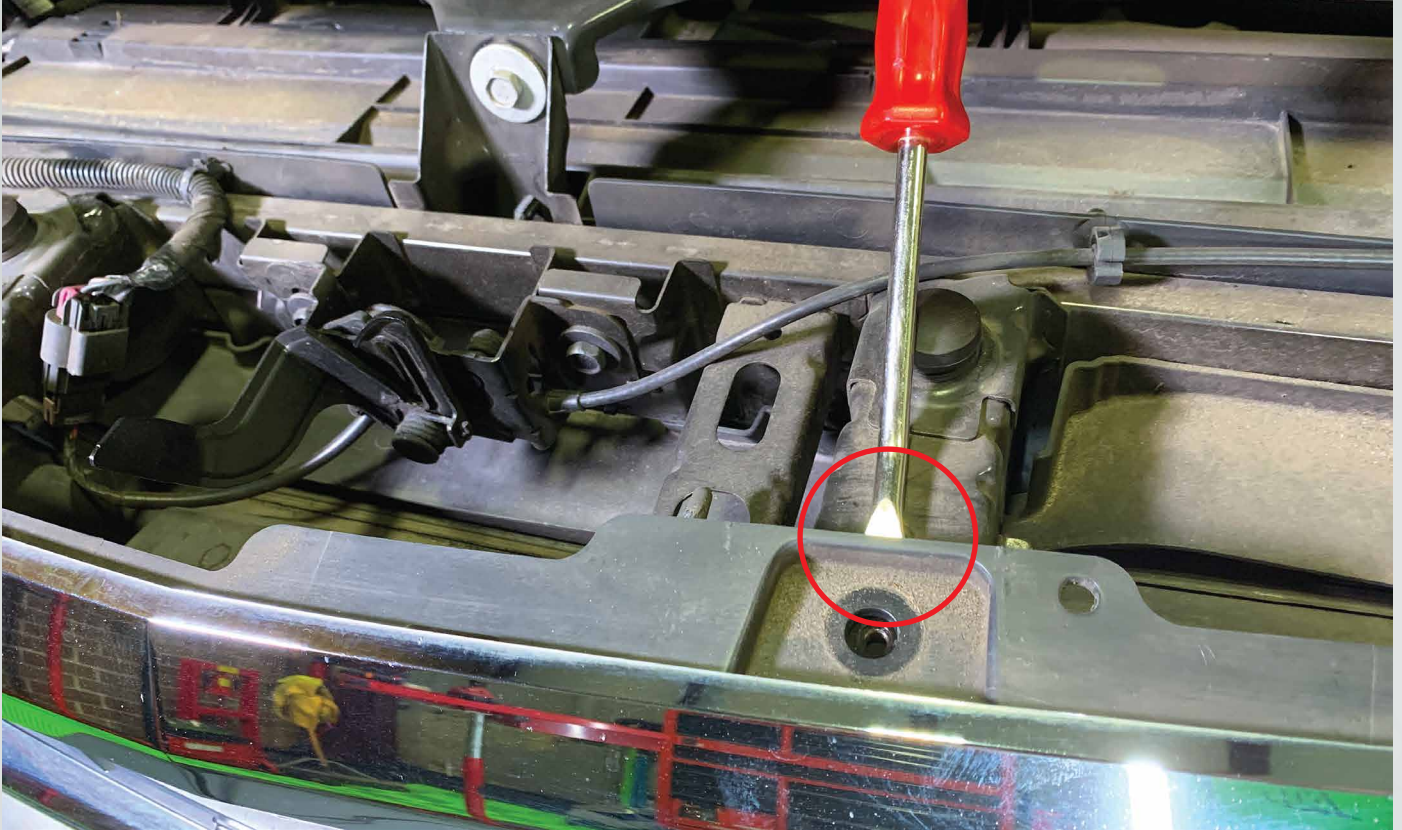
6. Remove the four (4) 10mm bolts holding the bottom of the grille.



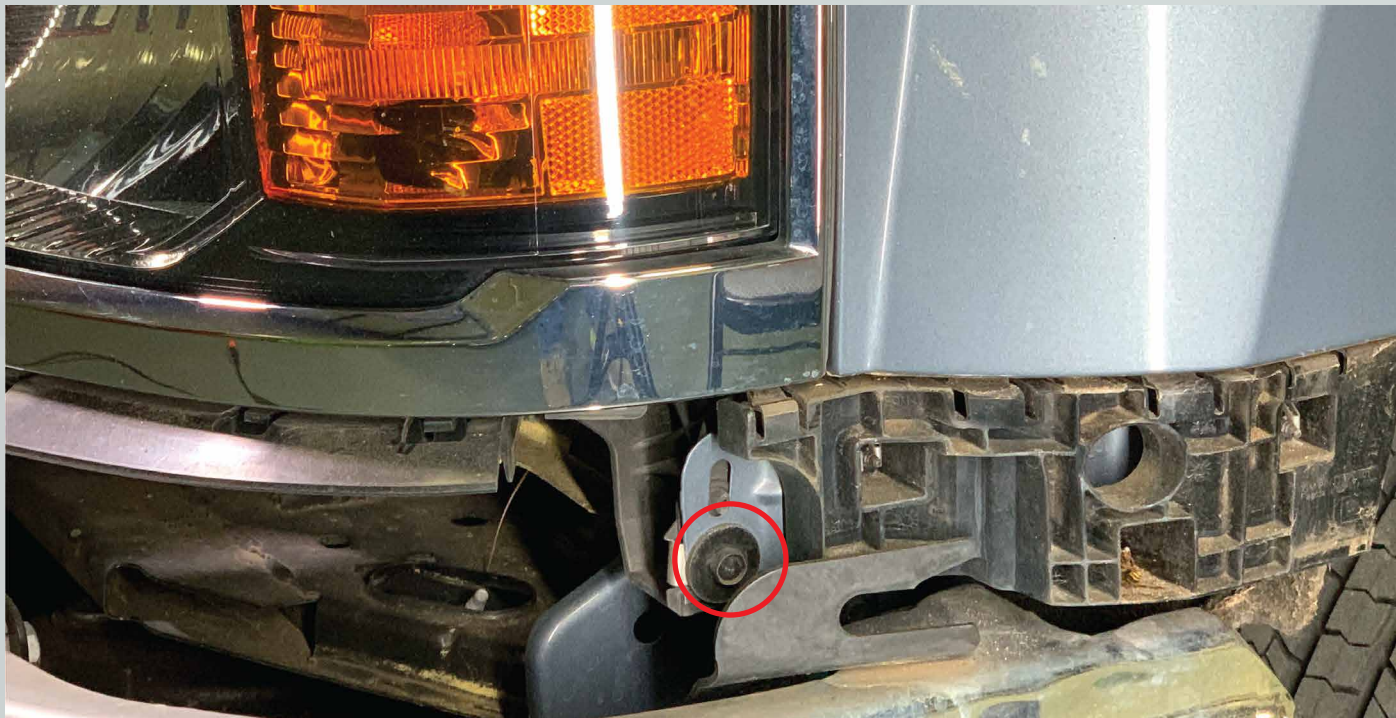
7. Remove the four (4) 10mm bolts from the top of the grille.



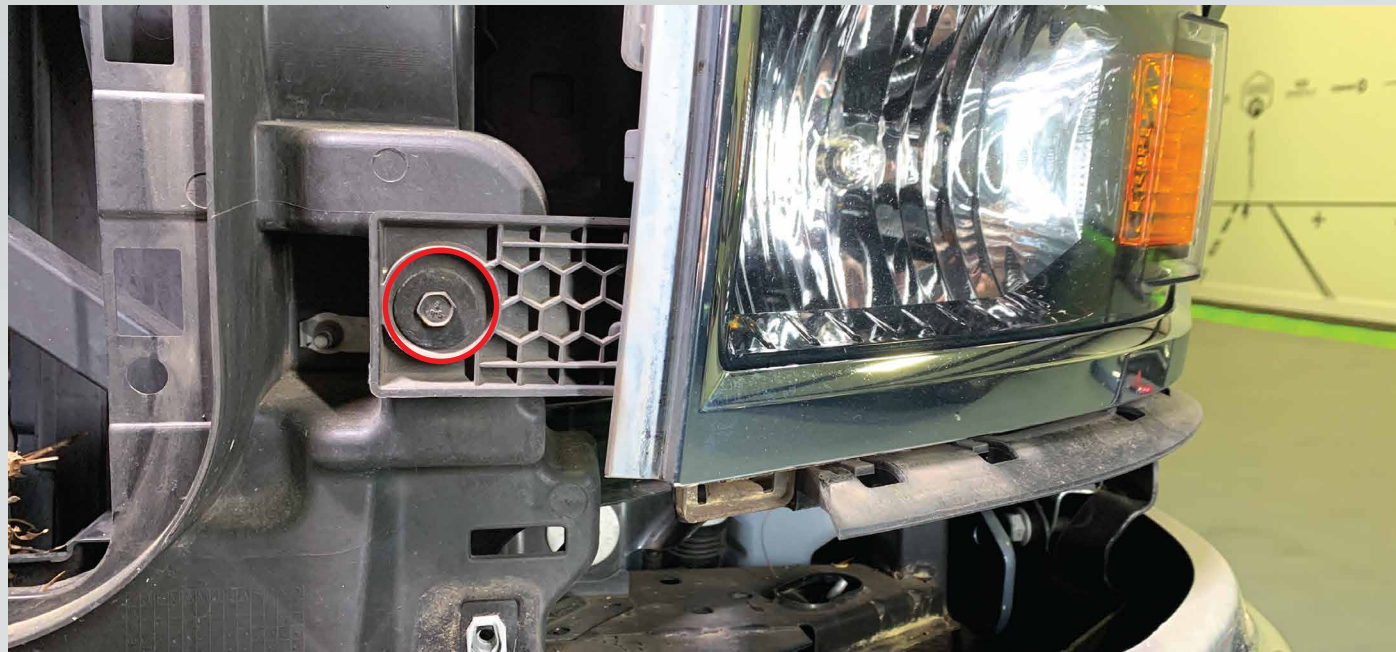
8. Pry up to release the plastic clips by every top bolt hole and pull forward on the top of the grille. Pull forward on the middle and bottom of the grille to release the clips and remove the grille off of the truck.



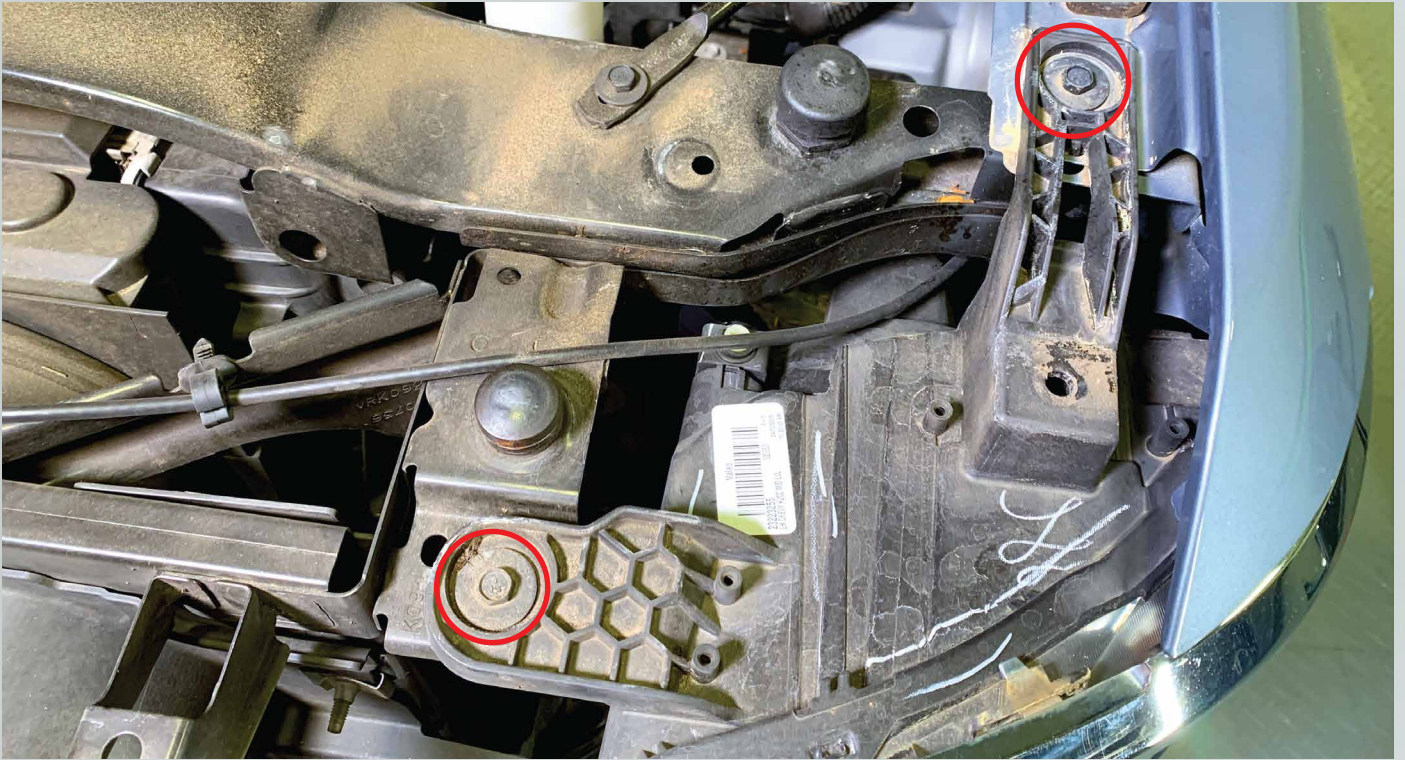
9. Remove one (1) 10mm bolt from the side of the headlight.



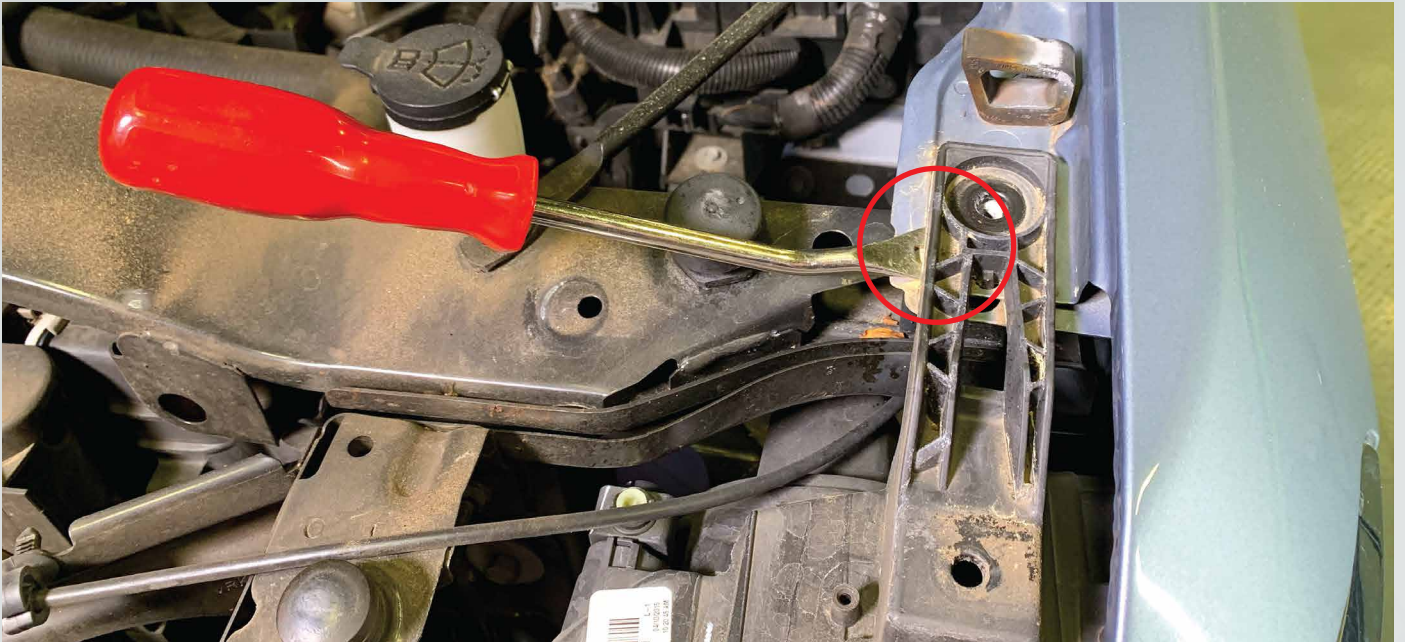
10. Remove one (1) 10mm bolt from this side tab.



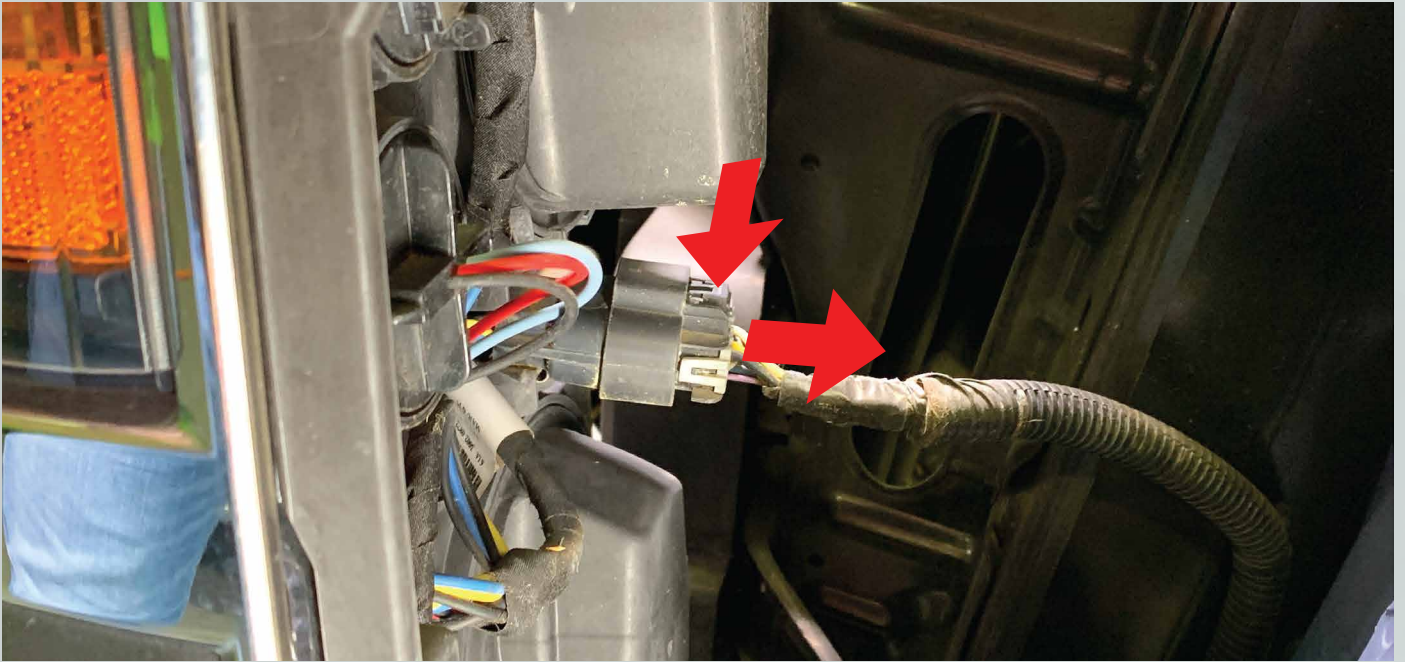
11. Remove two (2) 10mm bolts from the top of the headlight.



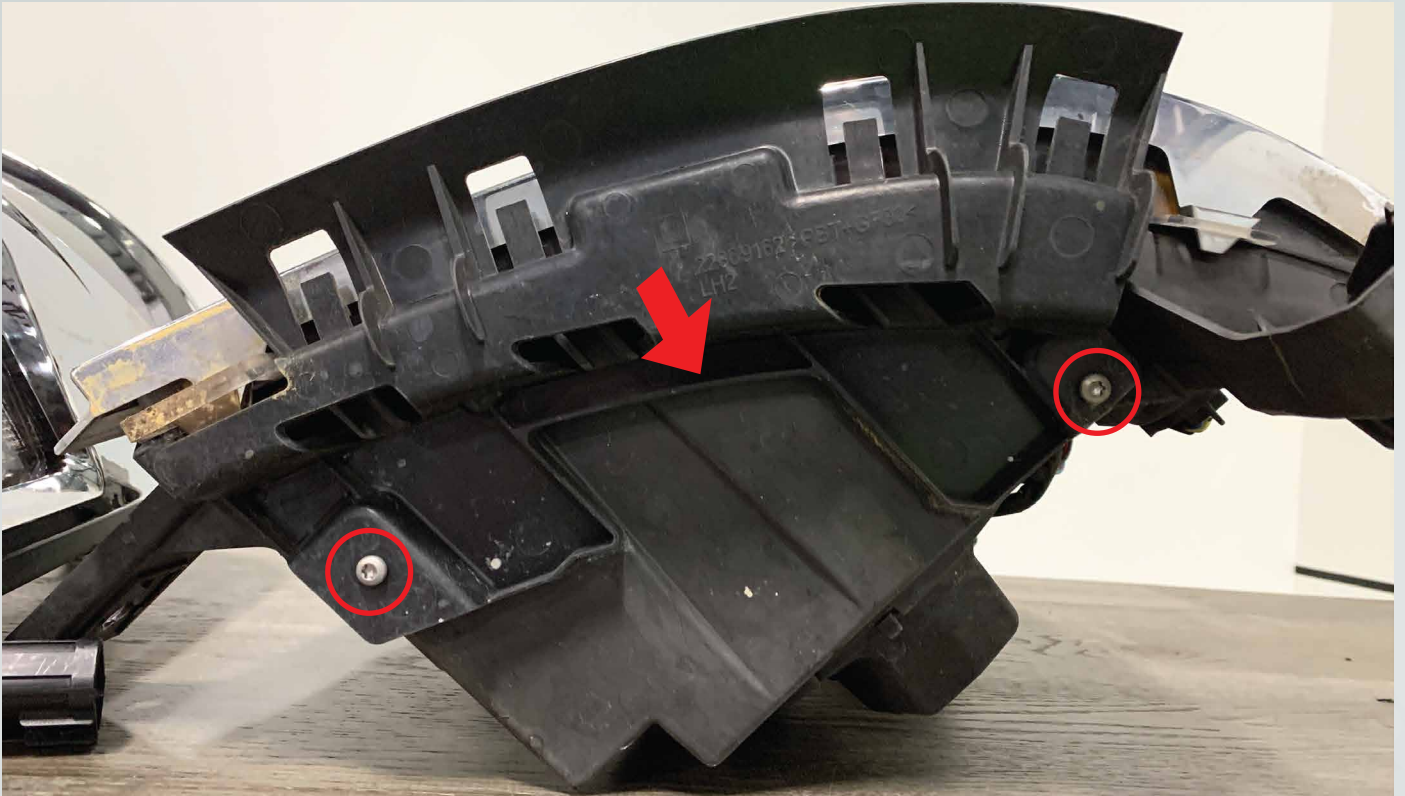
12. Pry up on the tab to release the headlight from the truck.



13. Disconnect the headlight plug by pressing down the release tab and pulling the plug away.



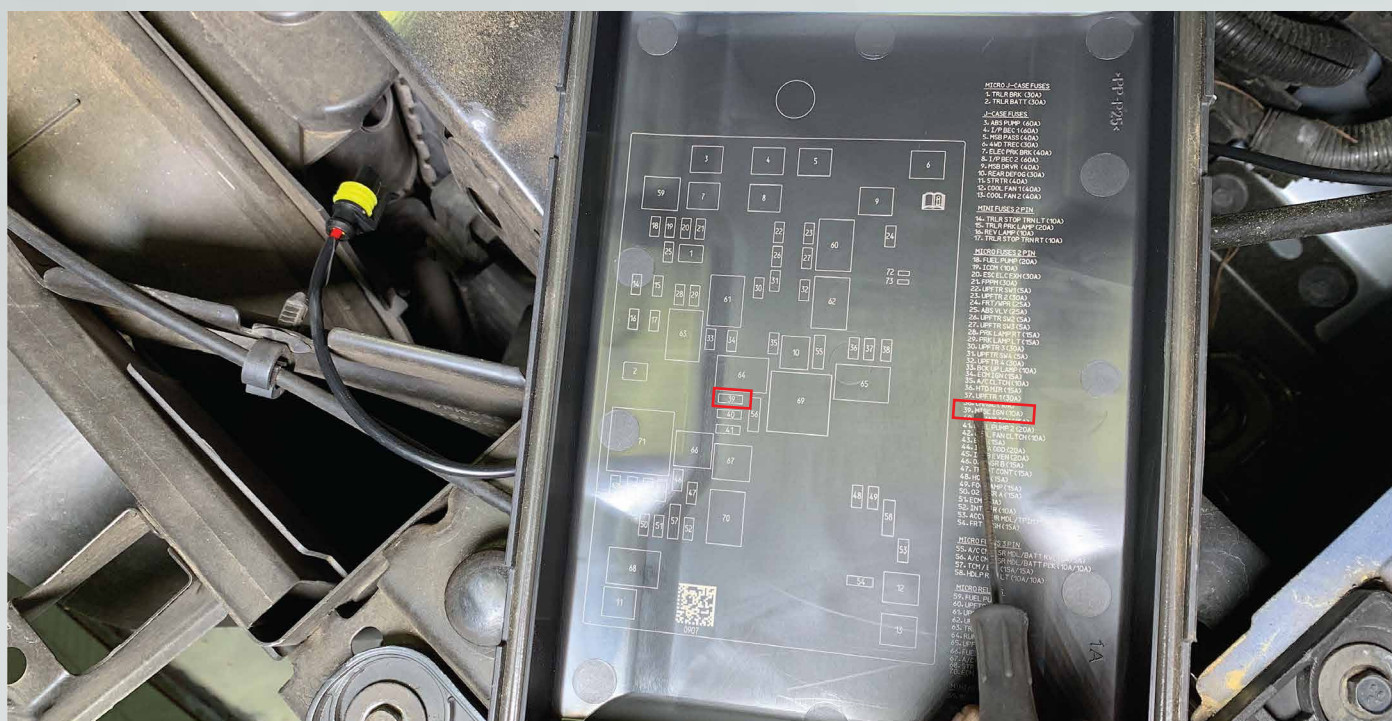
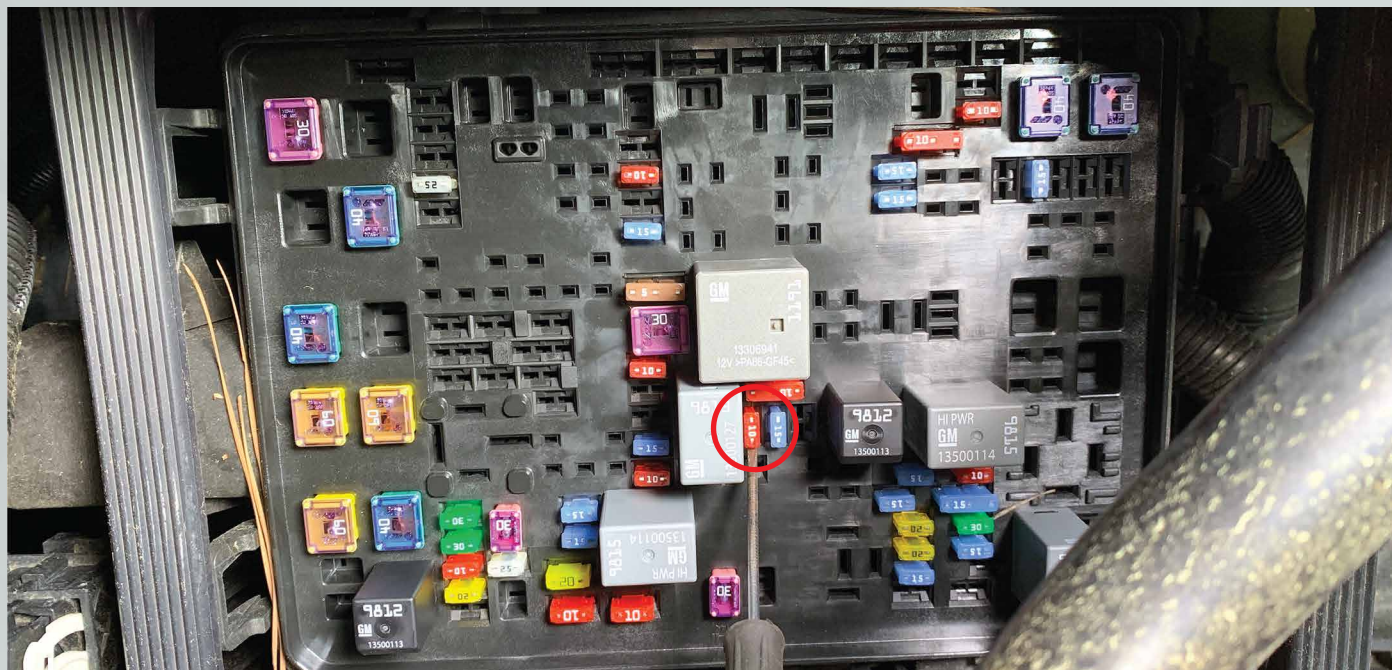
14. Remove these two (2) T20 torx screws from the bottom bracket, slide the bracket down to remove. Transfer the bracket over to your XB headlight.



15. Repeat steps 9-14 on the other headlight.

16. Locate the supplied headlight trim, remove the backing of the double sided tape and place onto the headlight lens.

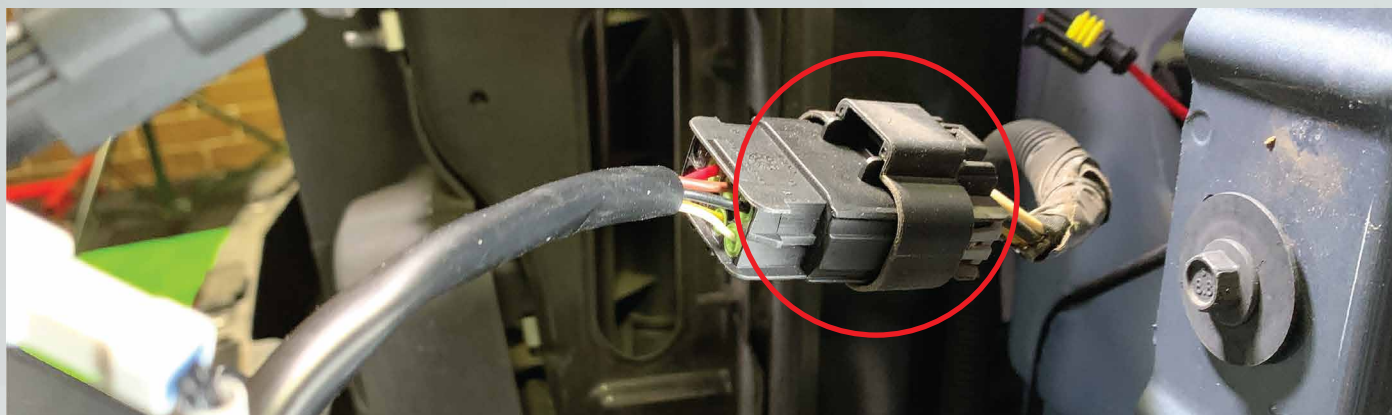
17. Locate your fuse box behind the driver side headlight, remove fuse #39 (10A).



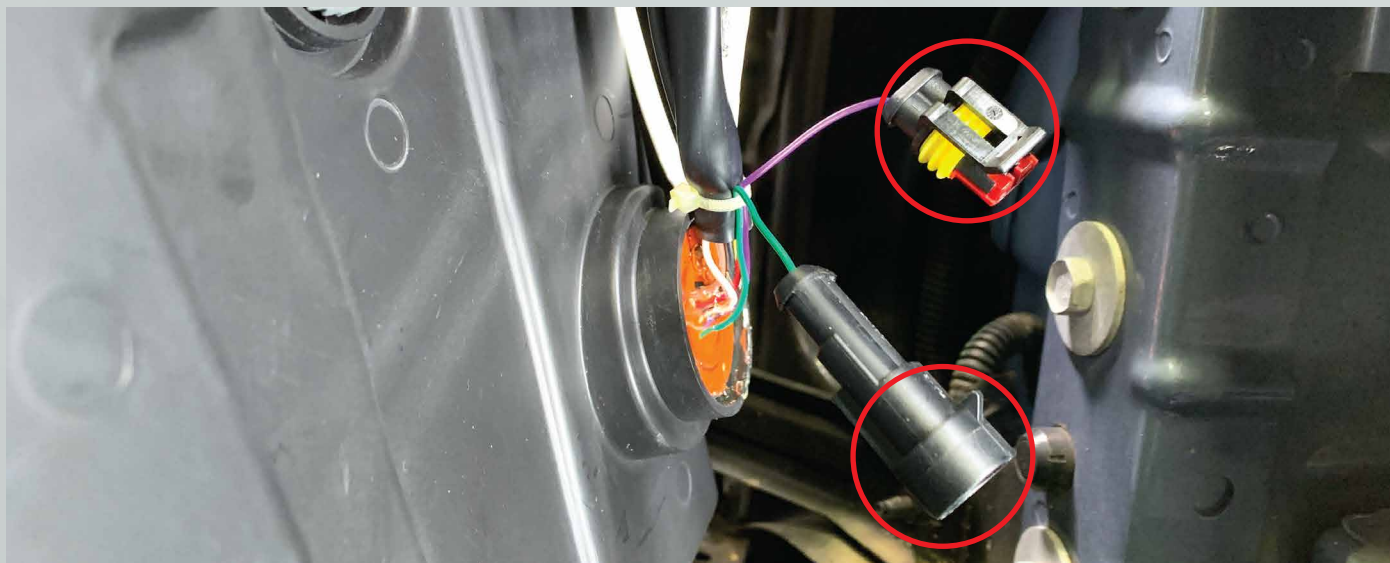
18. Locate the included DRL harness and plug it into slot #39. Run the shorter side of the DRL harness to the driver side headlight area and run the longer side to the passenger side headlight area.



19. Match up and plug in the multi pin connectors on the truck and XB headlights. Plug in the drl harness into the xb headlight connector.



20. To have a sequential turn signal leave these 2 connectors unplugged. To have a solid turn signal simply plug these 2 connectors into each other.



21. Repeat step 19-20 on the other side of the truck.

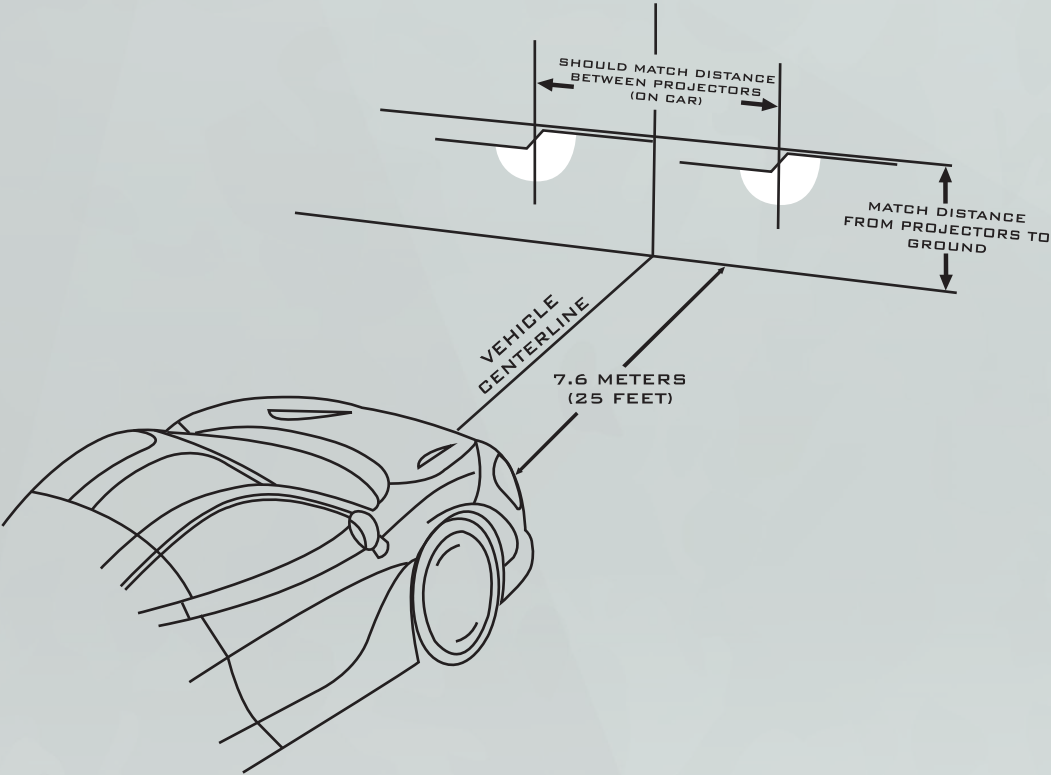
22. Turn the truck on and test all of the functions to make sure everything works.

23. Reassemble the truck in the reverse order that you took it apart.

24. To adjust the height of the headlight beam insert a philips head screwdriver into this slot and rotate it clockwise to make the beam go down and counter clockwise to make the beam go up.



- Please refer to the aiming standards below when adjusting your headlight beam.



ENJOY YOUR NEW MORIMOTO XB HEADLIGHTS!

