



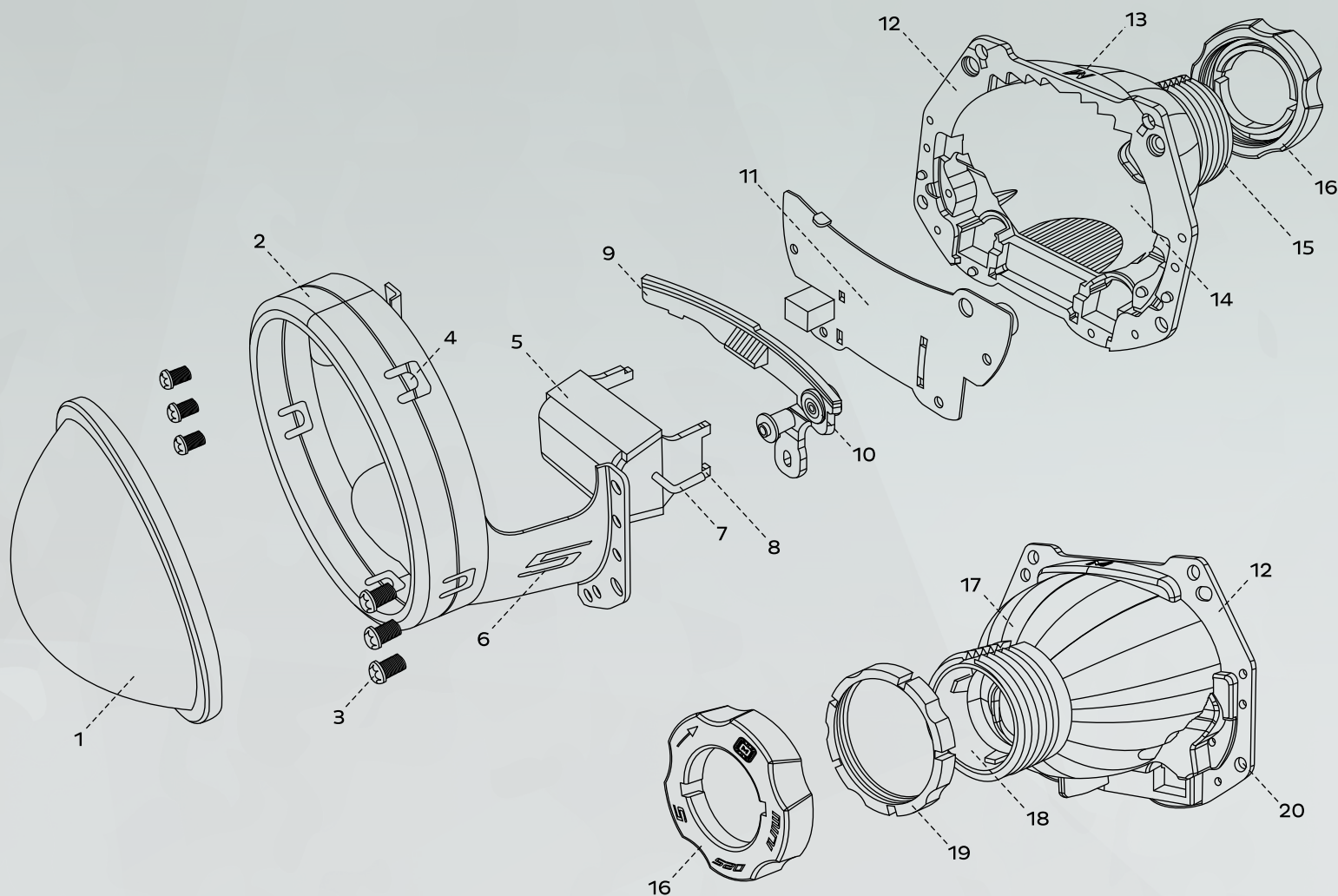
THE AUTOMOTIVE LIGHTING BENCHMARK

MINI D2S 5.0 INSTALL GUIDE

WARNING: By reading this document, you agree it is only to be used as an educational guide. Morimoto Lighting nor its dealers make guarantees on any finished results, nor are they to be held responsible for any damage, misuse, or personal injuries. If you are unable to clearly understand and adapt the information below, professional installation is recommended.



PROFESSIONAL INSTALLATION RECOMMENDED



PARTS LIST

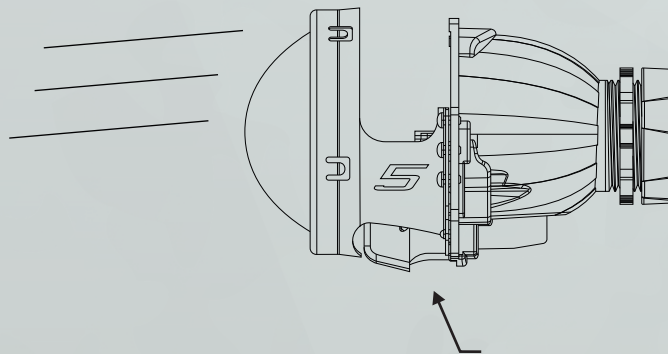
1. KURIA® SAPPHIRE LENS
2. STAMPED ALUMINUM LENS HOLDER
3. M3 STAINLESS PAN HEAD SCREWS
4. LENS-RETAINING PRONGS
5. MAGNETIC SIDE-PULL SOLENOID
6. STAMPED "5" INSIGNIA
7. SOLENOID PLUNGER ARM

8. SOLENOID MOUNTING FEET
9. DIE-CAST ECE CUTOFF SHIELD
10. LOW FRICTION BRASS PIVOT POINT
11. SOLENOID / SHIELD PLATE
12. OPTICAL REFLECTOR BOWL
13. LASER-ENGRAVED MORIMOTO LOGO
14. SILVER METALIZED SURFACE TREATMENT

15. THREADED MOUNTING SHAFT
16. 1-PIECE MOTOHOLD2R
17. MORIMOTO SUN-INSPIRED HEAT SINKING
18. INTERNALIZED BULB MOUNT RECEPTACLE
19. THREADED CNC LOCK RING
20. D2S 4.0 STANDARD BOLT PATTERN

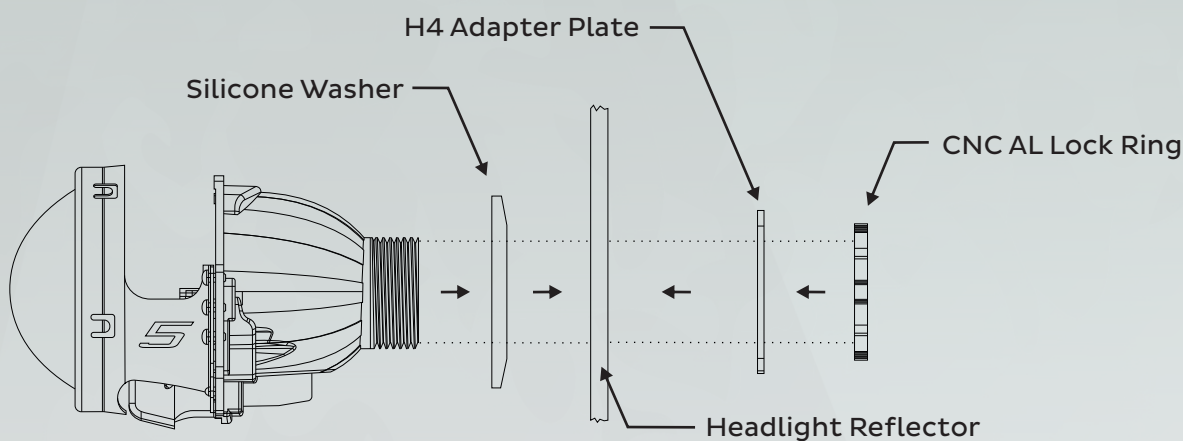
SPECIAL INSTALLATION NOTE

Mount projector rotationally level with the solenoid and cutoff shield on the bottom for proper light output.



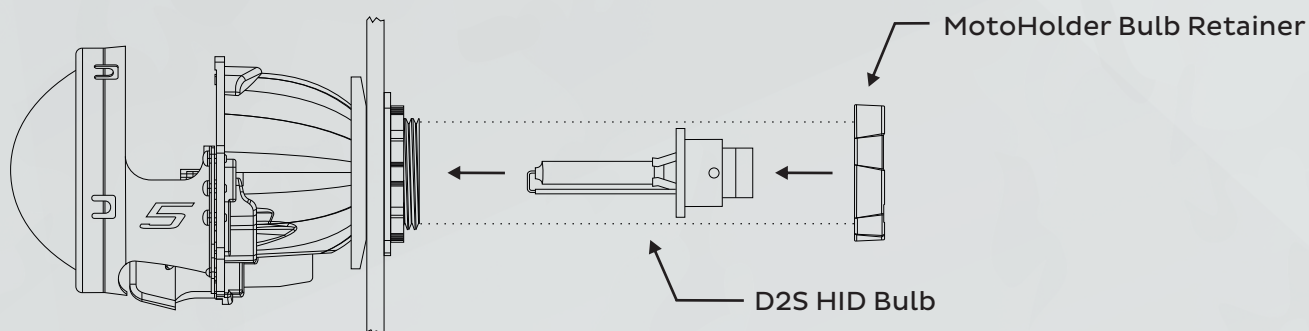
HARDWARE SCHEMATIC

Tighten CNC AL Lock Ring until snug. An Optional Lock Ring Tool is available as well.



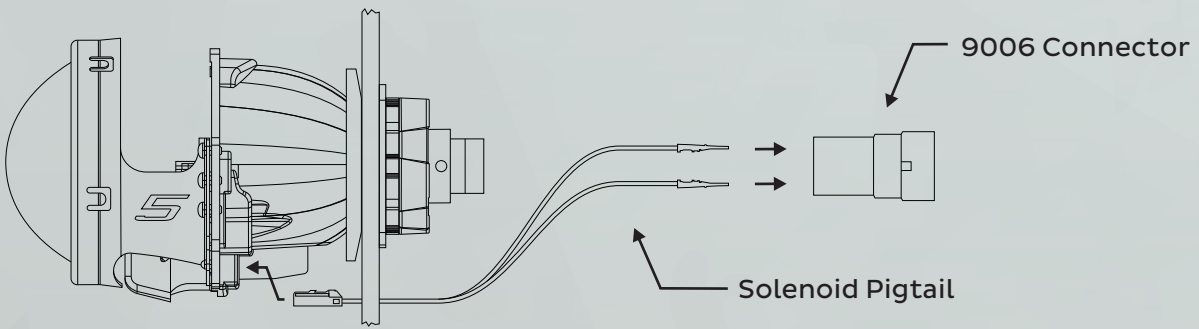
BULB INSTALLATION SCHEMATIC

Line up slots MotoHolder to clear the two bulb tabs, then slide on and tighten until snug.



BULB INSTALLATION SCHEMATIC

Line up slots MotoHolder to clear the two bulb tabs, then slide on and tighten until snug.



-END-